



No. 47-1, Jhongjheng Rd., Minsyong Industrial Zone,
Minsyong Township, Chiayi County, Taiwan, R.O.C. 621
Tel: +886-5-220-6695
Fax: +886-5-221-8320
e-mail: aone.motor@msa.hinet.net

PART LIST-CHASSIS

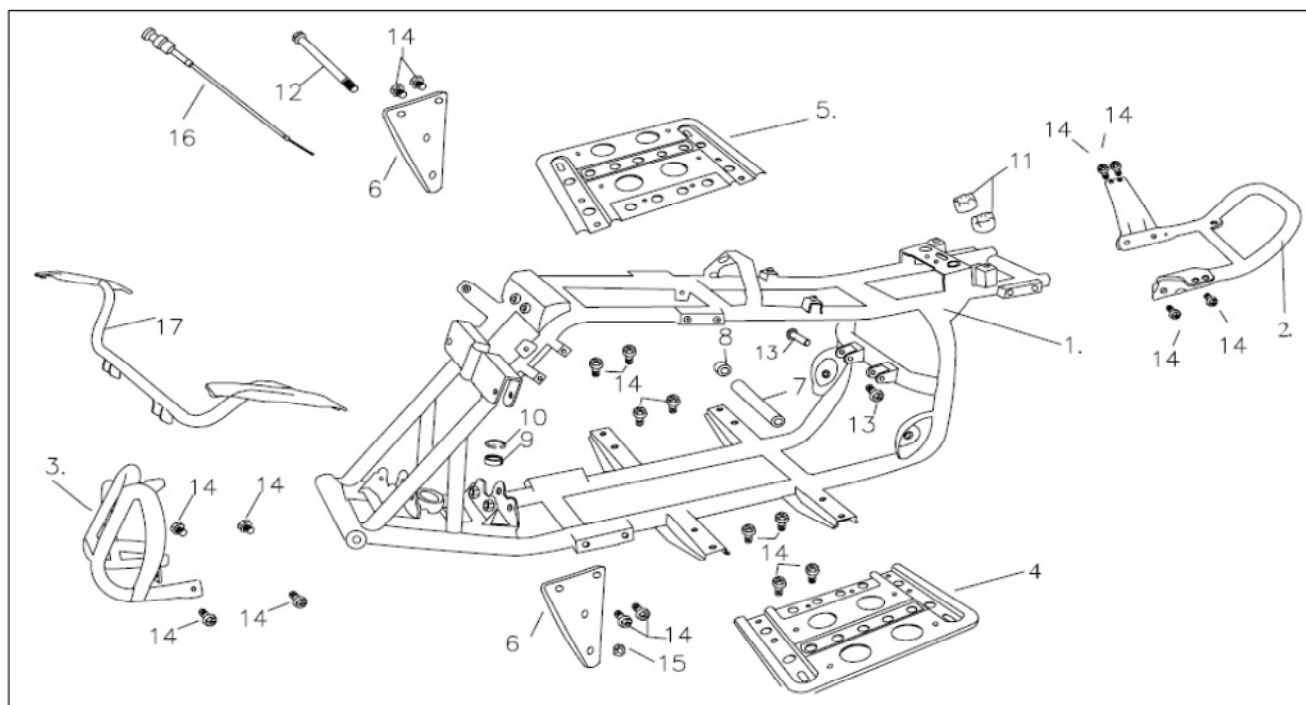
BOM NO.: Z3ARB-100L-UK

制定部門： 設計課
編訂： 陳美雪
審查： 陳俊欽
核准： 陳俊欽
發行日期： 2010.6.16

修改記錄

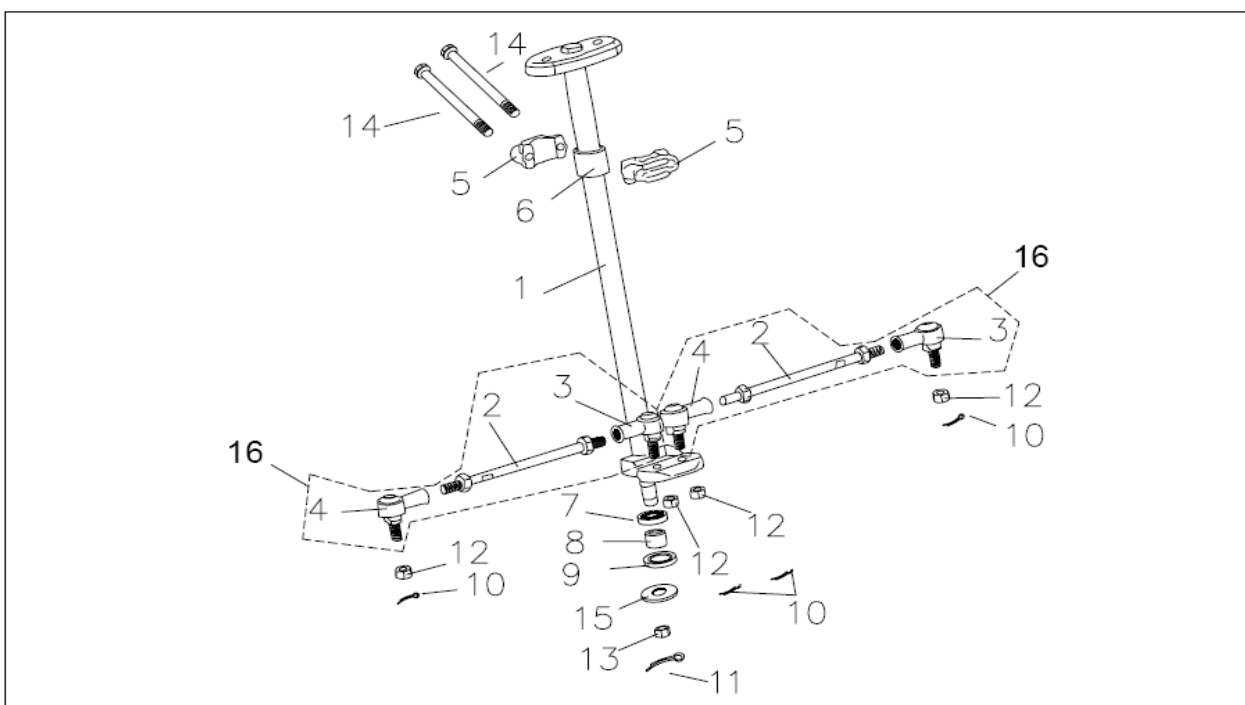
版別	原頁次	修訂日期	修訂摘要	新頁次	審核

F1, Frame Body



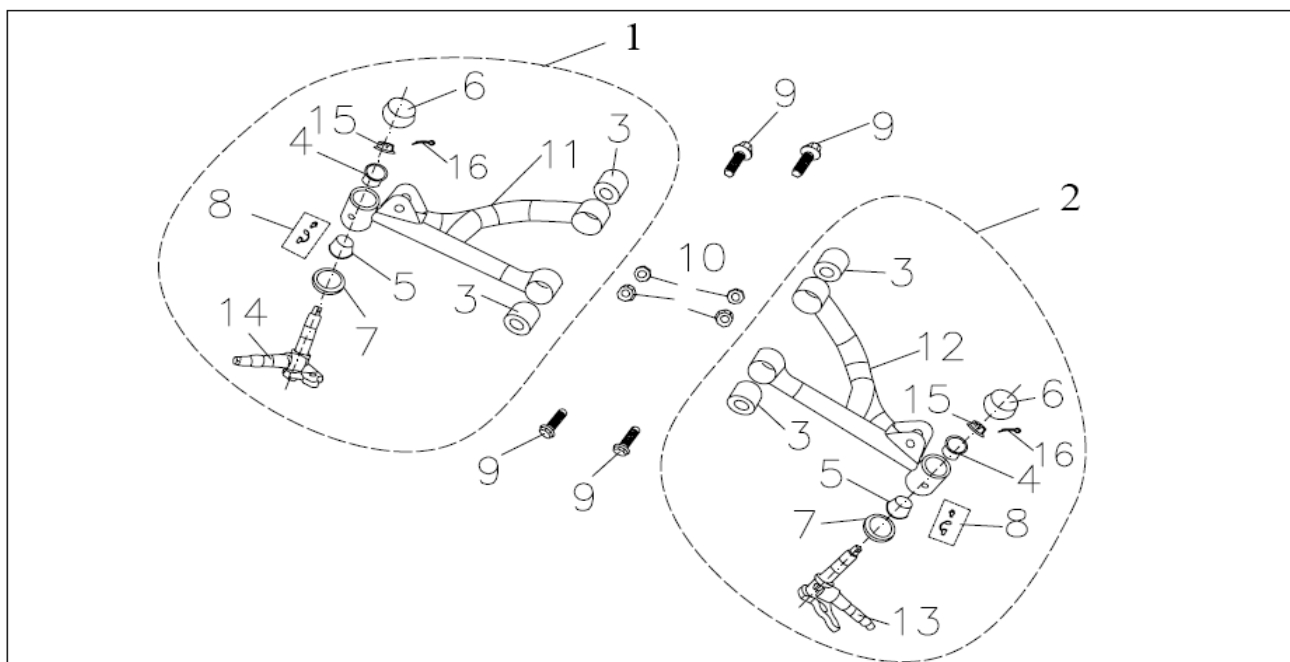
Item	Part No.		Part Name	Spec.	Q'ty
1	50100-3AR-001	車架	Frame Body (Enclosed Footwall)	全罩式/腳刹/單A臂-黑色	1
2	50400-3AR-BK0	後扶手	Rear Carrier	無認證-黑色	1
3	50200-3AR-BK0	防護桿	Bumper	單A臂/水冷-黑色	1
4	50600-3AR-BK0	腳踏板鐵	Enclosed Footwall	全罩式-黑色	1
5	50630-3AR-BK0	腳踏板鐵	Enclosed Footwall(Foot Brake)	腳刹/有孔-黑色	1
6	50110-3AR-000	引擎套座(左右通用)	Mounting Plate, Engine		2
7	50150-1317103	引擎間隔管(長)	Spacer, Crankcase	12.5×17×103	1
8	50150-1322020	引擎間隔管(短)	Spacer	12.5×22×20	1
9	96140-6002ZZ	軸承	Bearing, Ball	6002ZZ	1
10	94520-32000	C型扣環	Clip, Cir.	RTW-32	1
11	50524-3AR-000	緩衝墊	Rubber Absorber, Seat	13×37×23	2
12	95701-12222	六角緣面螺栓	Bolt ,Hex. Flange	M12×222	1
13	95801-08038-07	六角緣面螺栓	Bolt ,Hex. Flange	M8×38	2
14	95701-08012-07	六角緣面螺栓	Bolt ,Hex. Flange	M8×12	20
15	90350U-12017	法蘭U型止鬆螺帽	Nut, Flange Insert Lock	M12×P1.25	1
16	17950-3AR-000	阻風門拉桿總成	Chock Ass'y, Manual	(標準型)	1
17	50710-3AR-BK0	土除架單A臂黑色	Bracket, Fender		1

F2, Steering



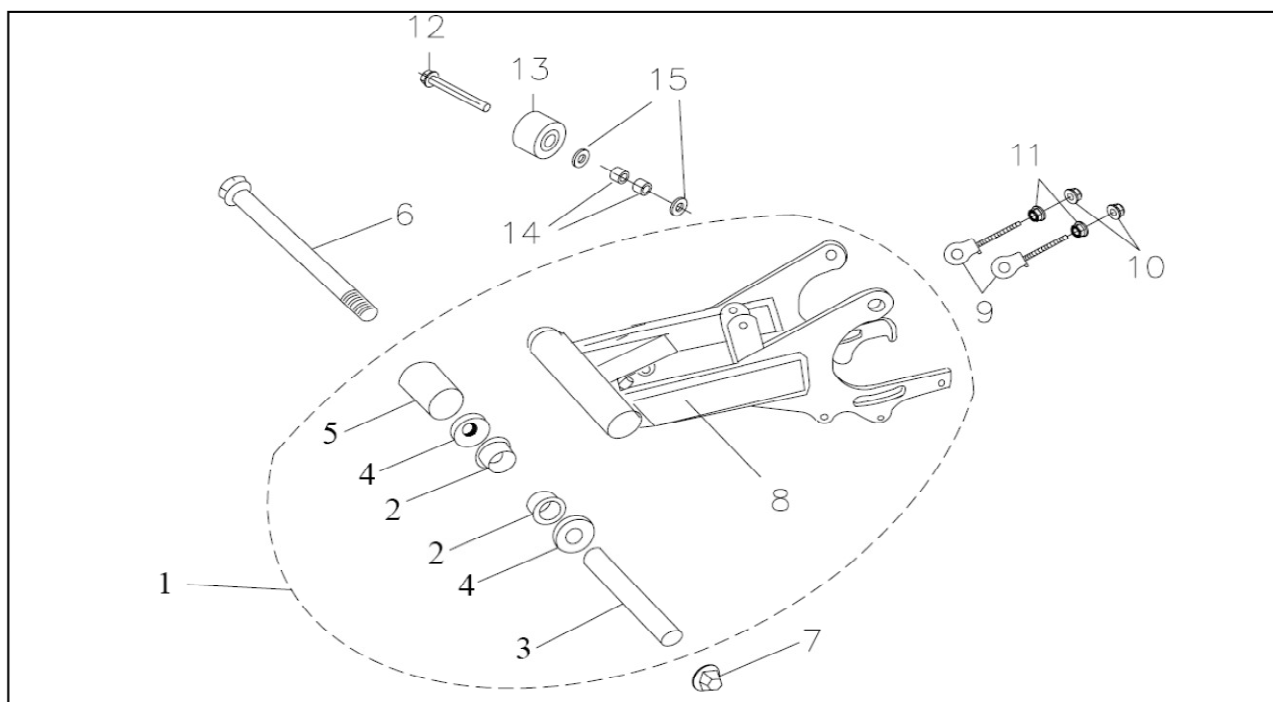
Item	Part No.		Part Name	Spec.	Q'ty
1	53200-3AR-BK0	方向柱組單A臂黑色	Steering Shaft		1
2	54120-3AR-000	轉向節螺栓	Tie Rod		2
3	54121-3AR-000	萬向頭(右牙)	R.H. Joint, Universal		2
4	54122-3AR-000	萬向頭(左牙)	L.H. Joint, Universal		2
5	53330-3AR-000	軸座套	Holder, Steering Shaft		2
6	53210-3AR-000	PU襯套	PU Seal, Steering		1
7	91258-183207	油封	Seal, Oil	18×32×7	1
8	50150-1522015	內襯套	Spacer, Inner	15×22×15	1
9	91258-223507	油封	Seal, Oil	22×35×7	1
10	94201-16190	開口銷	Cotter Pin	1.6×19	4
11	94201-32425	開口銷	Cotter Pin	3.2×42.5	1
12	90350U-10014	法蘭U型止鬆螺帽	Nut, Flange Insert Lock	M10×P1.25	4
13	90350U-14000	法蘭U型止鬆螺帽	Nut, Flange Insert Lock	M14×P1.5	1
14	95801-08066-97	六角緣面螺栓	Bolt ,Hex. Flange	M8×66	2
15	94101-1440020K	平面墊圈	Washer, Plate	14×40×2.0	1
16	54110-3AR-260	轉向節螺栓	Tie Rod Ass'y		2

F3, Suspension Arm

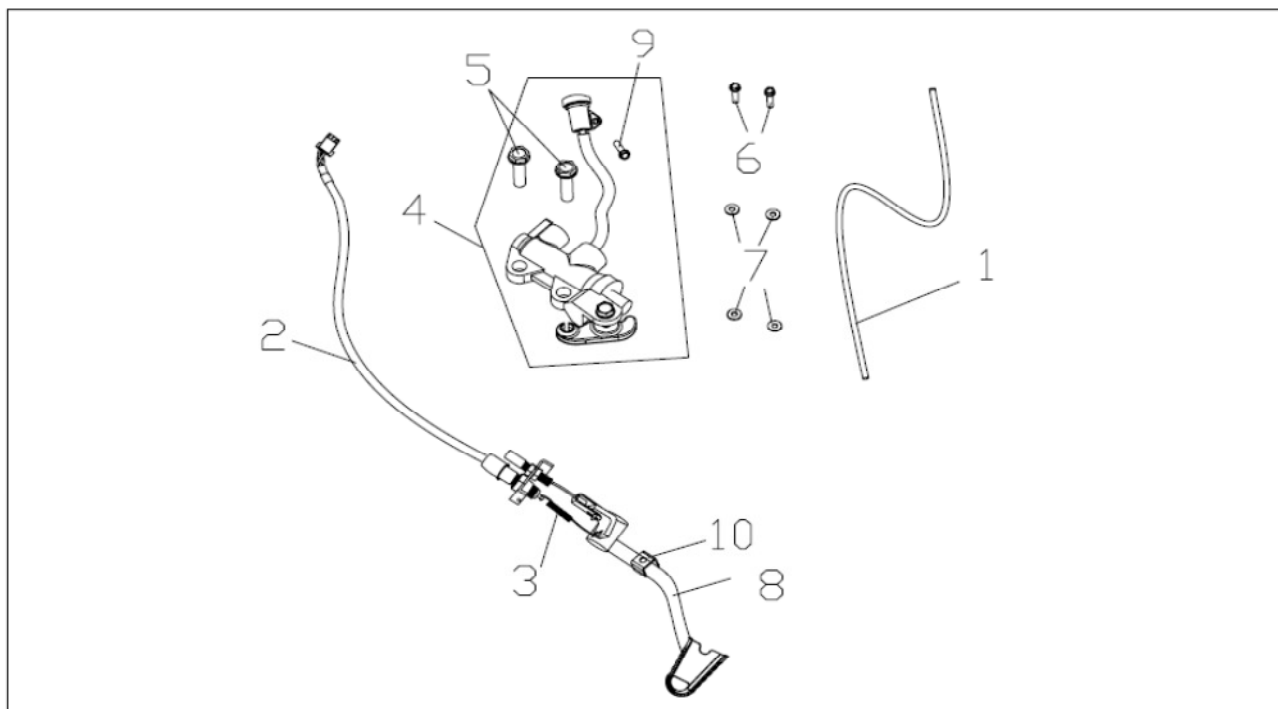


Item	Part No.		Part Name	Spec.	Q'ty
1	54160-3AR-BKA	右A臂總成(黑色)	R. Arm Ass'y, Suspension	單A	1
2	54260-3AR-BKA	左A臂總成(黑色)	L. Arm Ass'y, Suspension	(黑色)單A	1
3	97350-102829	懸臂橡膠襯套	Rubber Bush, Suspension Arm	10×28.1×27/29	4
4	54221-3AR-000	上懸背橡膠襯套	Up Bush, Suspension Arm	15.5×21.1×20	2
5	54220-3AR-000	下懸背橡膠襯套	Bottom Bush, Suspension Arm	17×21.1×20	2
6	54310-PK-6143	防水密封墊	Seal, Waterproof	26×35.8×18.3	2
7	54320-PK-6148	防塵密封墊	Seal, Dustproof	26.6×36.4×9.5	2
8	96201-10000	油嘴	Valve, Grease	M6	2
9	96000-10048	六角緣面螺栓	Bolt, Flange	M10×48	4
10	90350U-10014	法蘭U型止鬆螺帽	Nut, Flange Insert Lock	M10×P1.25	4
11	54161-3AR-BKA	右A臂	R. Arm, Suspension		1
12	54261-3AR-BKA	左A臂	L. Arm, Suspension		1
13	54250-3AR-000	萬向節-L	L. Knuckle		1
14	54150-3AR-000	萬向節-R	R. Knuckle		1
15	90352-10080	堡型螺帽	Nut, Castle	M10×P1.25	2
16	94201-16190	開口銷	Cotter Pin	1.6×19	2

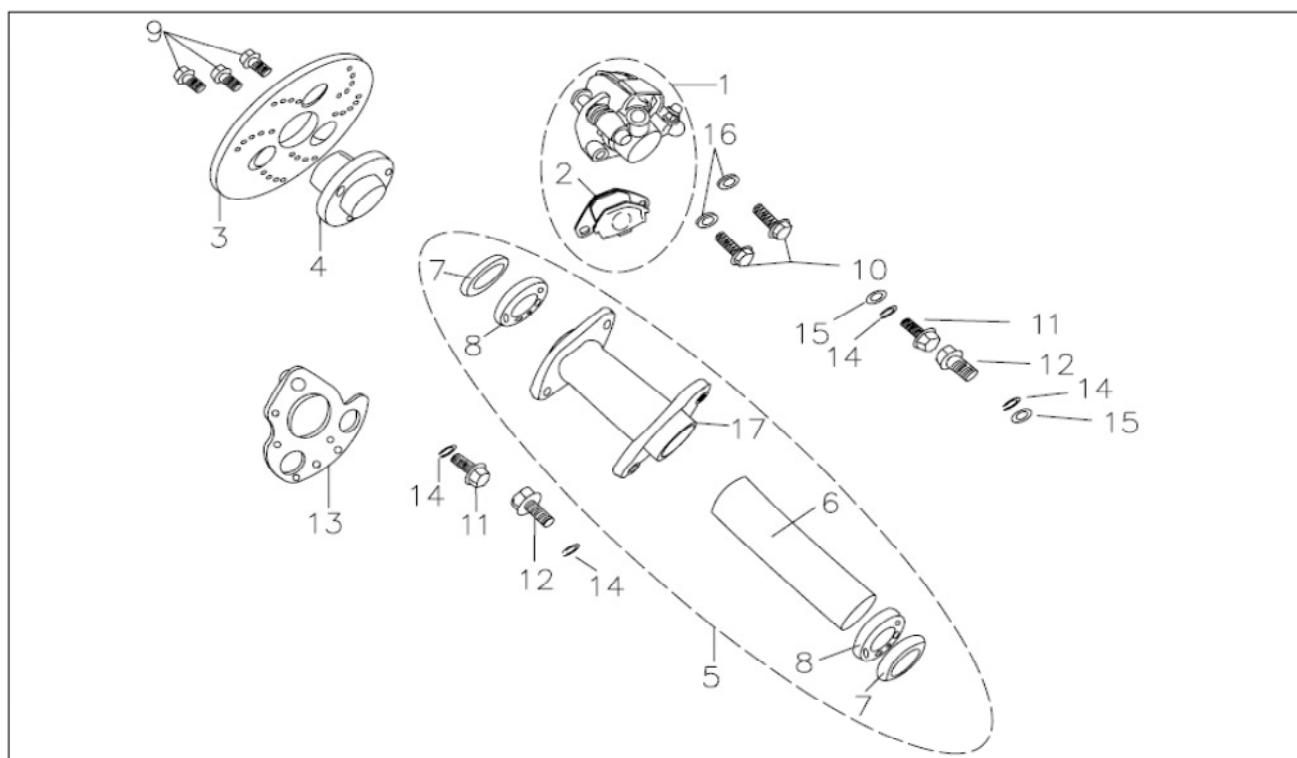
F4, Swing Arm



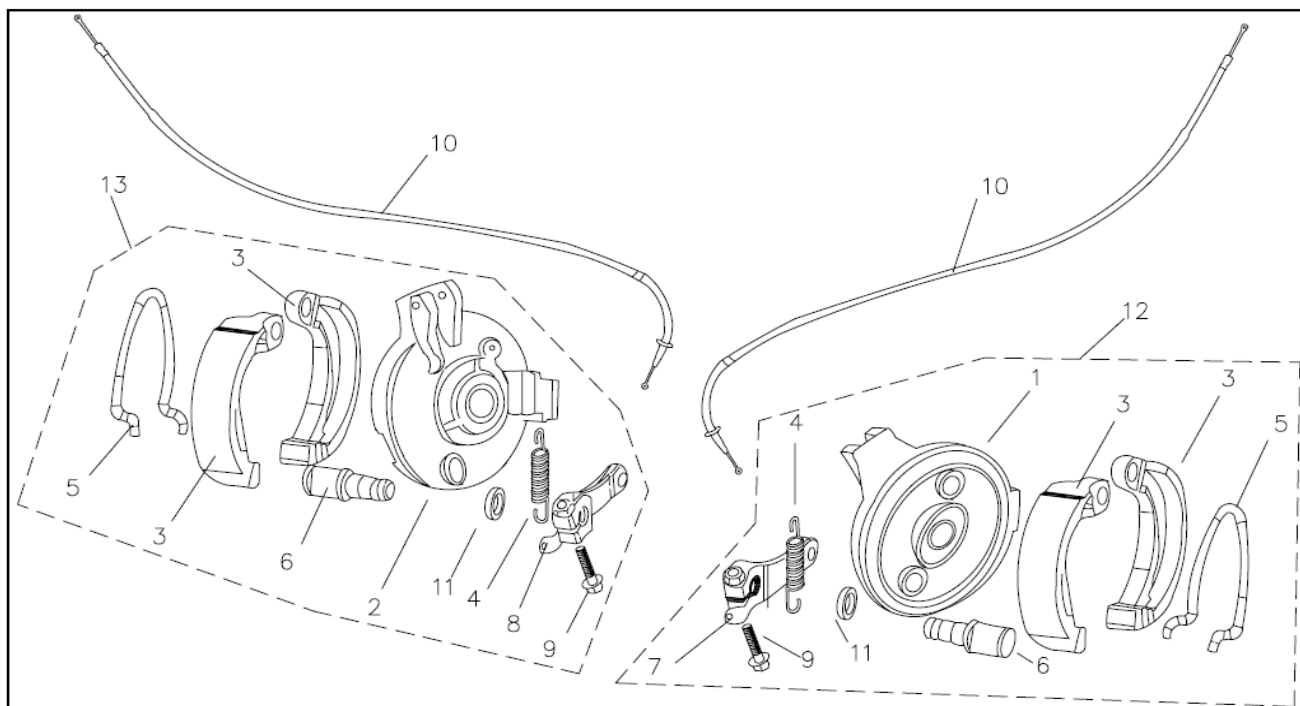
Item	Part No.		Part Name	Spec.	Q'ty
1	52200-3AR-BKA	后叉總成(黑色)	Arm Ass'y, Swing		1
2	52220-3AR-000	后叉壓套	Bush, Swing Arm	20.1×27.6×20	2
3	52210-3AR-000	后叉軸套	Spacer, Swing Arm	14.1×20×253	1
4	52310-OS-8234	防塵蓋(10S 8234)	Seal, Dustproof	30.8×38.5×7×14	2
5	52320-PK-6152	橡膠套	Rubber Sleeve	31.7×38×65	1
6	95802-14280	六角緣面螺栓	Bolt ,Hex. Flange	M14×280	1
7	90350U-14000	法蘭U型止鬆螺帽	Nut, Flange Insert Lock	M14*P1.5	1
8	52221-3AR-BKA	后叉	Arm, Swing		1
9	40543-3AR-000	鏈條調整器	Adjuster, Chain	6mm	2
10	94050-06000	六角緣面螺帽	Nut, Hex Flange	M6×P1.0	2
11	90350U-06000-K	法蘭U型止鬆螺帽	Nut, Flange Insert Lock	M6*1.0	2
12	95801-08066-12BN	六角緣面螺栓(耐落)	Nut, Hex Flange	M8×66	1
13	40531-4129-08	滾子總成(大)	Roller, Chain	Ø38xL25xØ8	1
14	50150-081310	間隔管-1	Spacer, 1	8x12.5x10	2
15	94101-08518-23B	平面墊圈	Washer, Plate	8.5x18x2.3	2

F5, Pedal, Rear Disc Brake

Item	Part No.		Part Name	Spec.	Q'ty
1	45127-3AR-000	腳刹油管	Hose, Foot Brake	700	1
2	45544-3AR-000	刹車彈簧開關	Spring, Braking Switch	1*7*72	1
3	45543-3AR-000	刹車線彈簧	Switch, Braking		1
4	45520-3AR-000	腳刹車總泵總成	Master Cylinder Ass'y, Foot Brake	Foot Brake	1
5	95801-08020-12B	六角緣面螺栓(鍍白鋅)	Bolt ,Hex. Flange	M8×20	2
6	90145-MS9-6110-M	刹車油管螺栓	Bolt, Brake Hose	M10×22	2
7	94104-10140-CU	銅墊圈	Washer, Copper	10.2×14×1.0	4
8	45530-3AR-000	腳刹車踏板	Pedal, Brake		1
9	90005-06012-17	十字大平頭螺栓	Bolt, Flate	M6*12	1
10	45535-3AR-000	腳刹車踏板防震襯套	Rubber, Damper		1

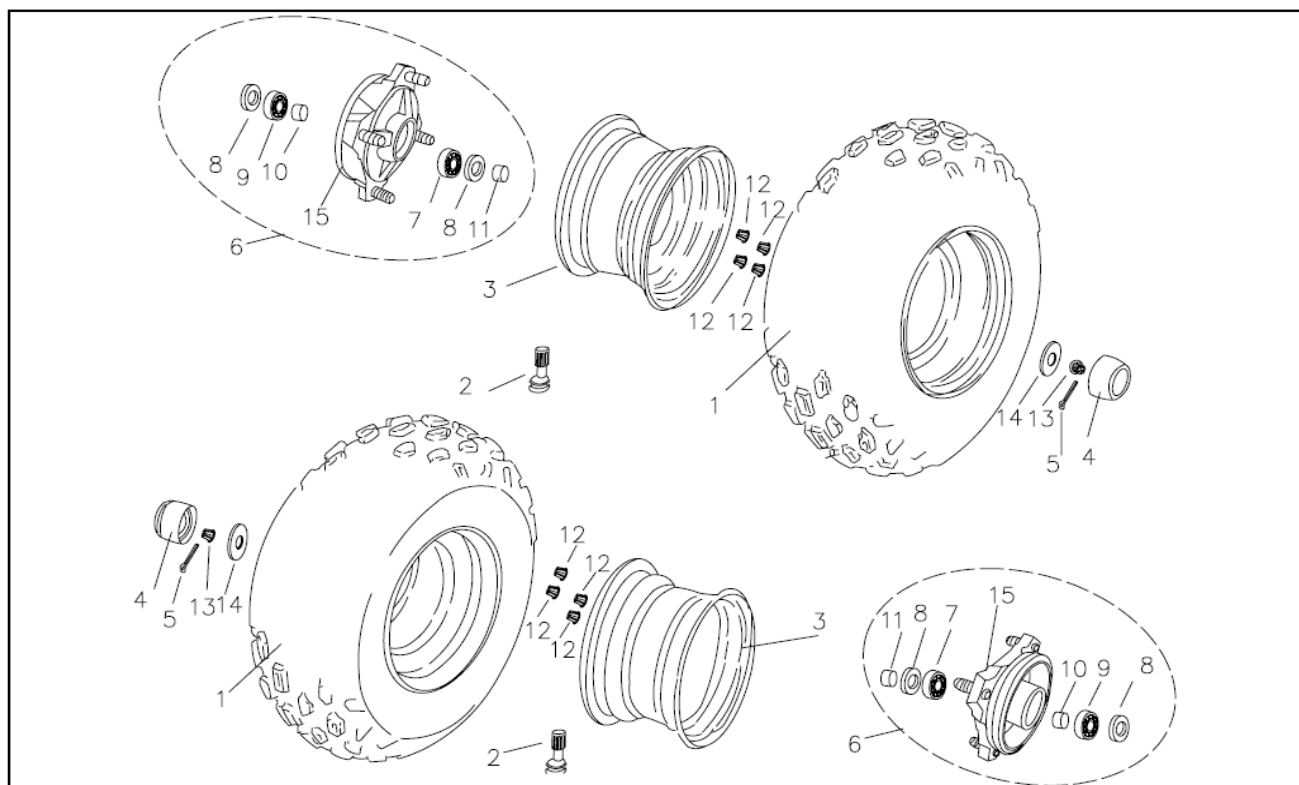
F6, Bearing Housing, R. Disc Brake

Item	Part No.		Part Name	Spec.	Q'ty
1	45250-3AR-A0A	後剎車卡鉗總成	Caliper , Rear Brake		1
2	45105-3AR-00A	後剎車片組	Pad Kit, Rear Disc Brake		1
3	45121-3AR-000	後剎車碟片	Disc, Rear Brake	180×38×62	1
4	42625-3AR-000	後剎車碟固定座	Bracket, Rear Brake Disc	P62×38	1
5	42635-3AR-BK0	後輪軸固定座總成	Housing, Rear Axle Bearing (Disc)		1
6	50150-3137134	中間軸套	Spacer	31×36.3×134.7	1
7	91258-355508	油封	Seal, Oil	35×55×8	2
8	96140-6006ZZ	滾珠軸承	Bearing, Ball	6006ZZ	2
9	91000-10014-97K	六角承窩螺栓	Bolt, Hex. Socket	M10×14	3
10	91000-08030	六角承窩螺栓	Bolt, Hex. Socket	M8×30	2
11	95701-12040-KL	六角緣面螺栓	Bolt ,Hex. Flange	M12×40	2
12	95701-12032-KL	六角緣面螺栓	Bolt ,Hex. Flange	M12*32	2
13	45290-3AR-BK0	卡鉗座	Bracket, Caliper		1
14	SW 12021K	彈簧墊圈	Washer, Spring		4
15	94101-1230030K	平面墊圈	Washer, Plate	12×30×3.0	2
16	45251-3AR-000	後剎車卡鉗間隔管	spacer, Caliper Ass'y	8×15×4	2
17	A42636-3AR-BK0	後輪軸固定座	Housing Ass'y, Rear Axle Bearing (Disc)		1

F7, Drum Brake, Front

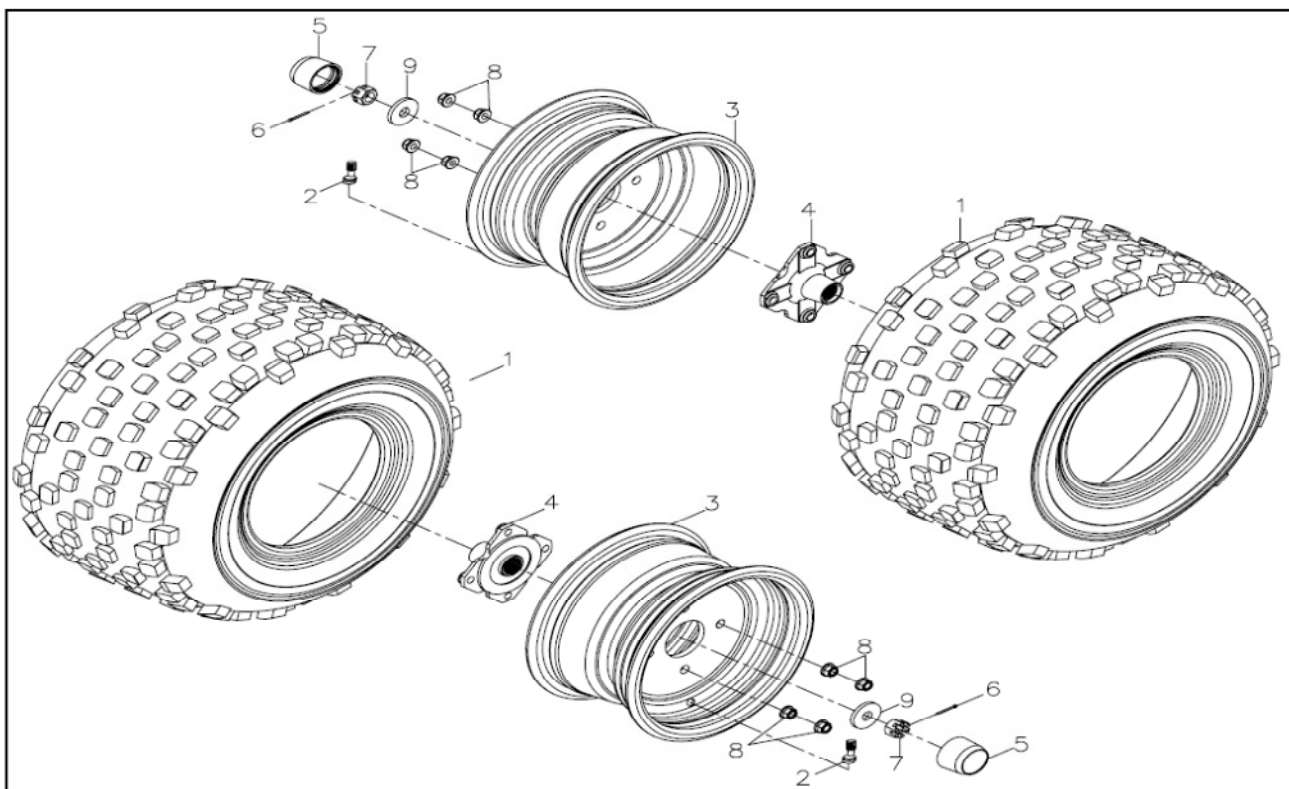
Item	Part No.		Part Name	Spec.	Q'ty
1	47151-3AR-000	前左剎車盤	L. Plate, Brake Anchor		1
2	47152-3AR-000	前右剎車盤	R. Plate, Brake Anchor		1
3	47105-3AR-000	煞車皮	F. Brake Shoe		4
4	47127-3AR-000	剎車搖臂彈簧	Spring, Front Brake	1.0×7.0×44.5	2
5	47106-3AR-000	剎車塊彈簧	Spring, Front Brake Shoe		2
6	47141-3AR-000	前煞車凸輪	Cam, Front Brake		2
7	47131-3AR-000	左搖臂	L. Lever, Front Brake Cam		1
8	47132-3AR-000	右搖臂	R. Lever, Front Brake Cam		1
9	95701-05024-07	六角緣面螺栓	Bolt, Hex. Flange	M5×24	2
10	47126-3AR-000	前制動導線	Cable, Front Brake	單A臂	2
11	47142-3AR-000	瑣環	Cotton Grommet		2
12	47151-3AR-A00	前左剎車盤總成	L. Plate Ass'y, Brake Anchor	單A臂	1
13	47152-3AR-A00	前右剎車盤總成	R. Plate Ass'y, Brake Anchor	單A臂	1

F8, Wheel & Tires, Front

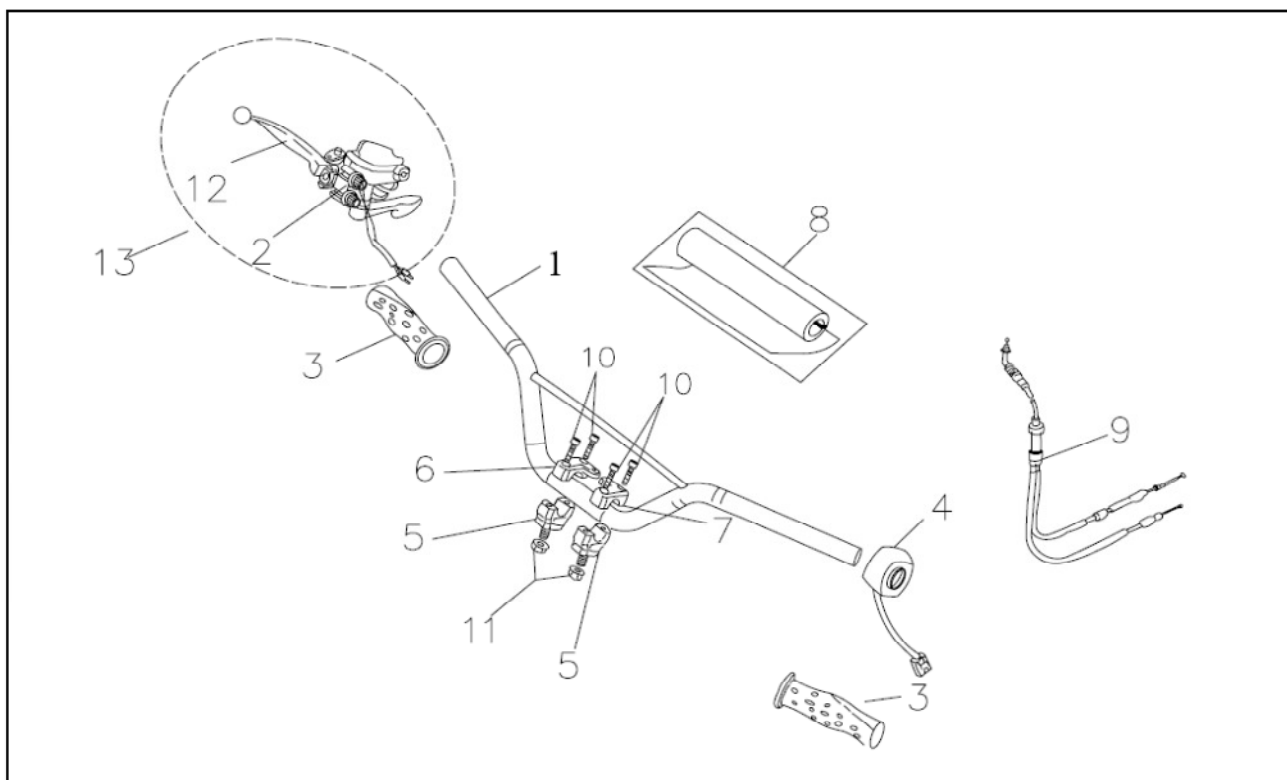


Item	Part No.		Part Name	Spec.	Q'ty
1	44710-190708DI2005	前輪胎	Tyre	19×7-8 DI2005	2
2	44711-TR-412	風嘴	Valve, Tyre	TR-412	2
3	44700-0855-11090-BK	輪圈	Rim	8×5.5 (STEEL)	2
4	44720-PK-6142	護套	Center Cap, Wheel		2
5	94201-32425	開口銷	Cotter Pin	3.2×425	2
6	A47121-3AR-000	前剎車殼總成	Hub Ass'y, Front Wheel	D-Arm	2
7	96140-6002Z	滾珠軸承	Bearing, Ball	6002Z	2
8	91258-223507	油封	Seal, Oil	22×35×7	4
9	96140-6003Z	滾珠軸承	Bearing, Ball	6003Z	2
10	50150-1522015	內襯套	Spacer, Inner	20.5×24.6×30.8	2
11	50150-1522010	外套軸	Spacer, Outer	16.3×23×8.5	2
12	90350U-10014	法蘭U型止鬆螺帽	Nut, Flange Insert Lock	M10×P1.25	8
13	90351-12000K	開槽止鬆螺帽	Nut	M12×P1.25	2
14	94101-1240050	平面墊圈	Washer, Plate	12×40×4.5	2
15	47121-3AR-000	前剎車殼	Hub., Front Wheel	(單A臂)	2

F9, Wheel & Tire, Rear

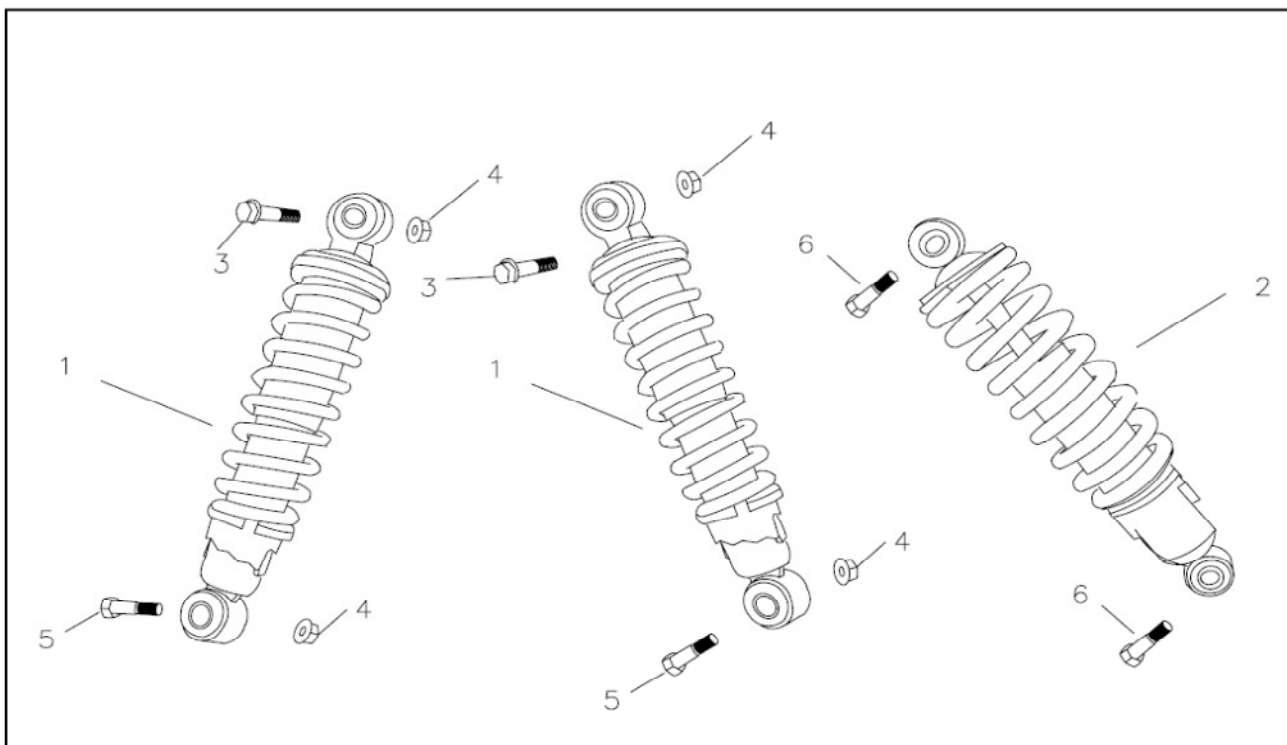


Item	Part No.		Part Name	Spec.	Q'ty
1	44710-189508DI2006	後輪胎	Tyre	18×9.5-8 DI2006	2
2	44711-TR-412	風嘴	Valve, Rim	TR-412	2
3	44700-0855-11090-BK	輪圈(黑色)	Rim	8×5.5(STEEL)	2
4	42350-3AR-000	後軸連接器	Hub., Rear Wheel		2
5	44720-PK-6142	護套	Center Cap, Wheel	PK-6142	2
6	94201-32425	開口銷	Cotter Pin	3.2×425	2
7	90351-14022-18	開槽止鬆螺帽	Nut	M14*P1.25	2
8	90350U-10014-10	法蘭U型止鬆螺帽	Nut, Flange Insert Lock	M10xP1.25	8
9	94101-1440045	平面墊圈	Washer, Plate	14.3×40×4.5	2

F10, Handlebar

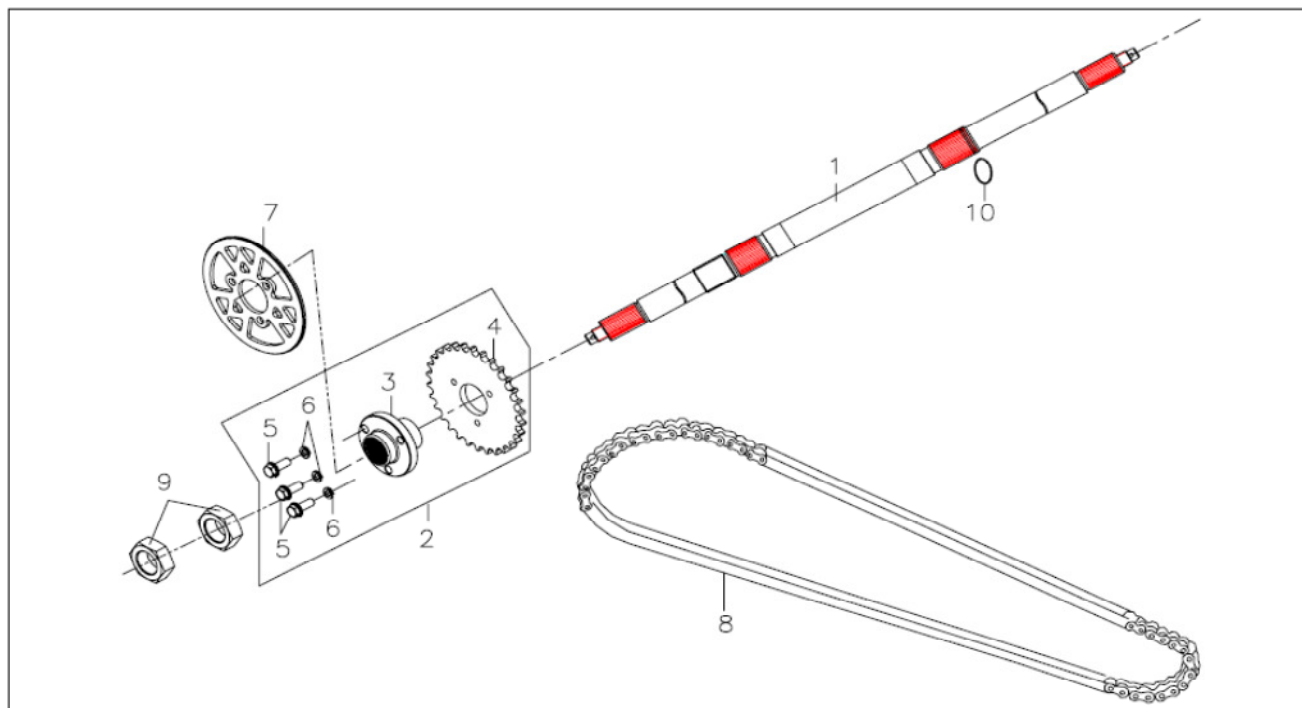
Item	Part No.		Part Name	Spec.	Q'ty
1	53100-3AR-BK0	手把無認證黑色	Handlebar		1
2	56160-3AR-000	油門座組合	F. Brake Level/ Throttle	parking brake無調整螺	1
3	53110-7A1-000	手把套	Grip, Handlebar	HY-603	2
4	35150-3AR-000	左開關組合無認證	Switch Ass'y		1
5	53300-3AR-000	手把下固定座	Bottom Holdar, Handlebar		2
6	53310-3AR-000	手把上固定座(右)	R. Up Holdar, Handlebar		1
7	53320-3AR-000	手把上固定座(左)	L. Up Holdar, Handlebar		1
8	53120-3AR-0PR	防撞套	Pad, Handlebar	PRO SHARK	1
9	17910-3AR-000	油門線	Cable, Throttle	標準型	1
10	91000-06025	六角承窩螺栓	Bolt, Hex. Socket	M6×25	4
11	90350U-10014	法蘭U型止鬆螺帽	Nut, Flange Insert Lock	M10×P1.25	2
12	53175-3AR-000	前鼓剎拉桿	R. Lever, Brake		1
13	A56160-3AR-000	前鼓剎總成	F. Brake Level/ Throttle Ass'y		1

F11, Suspension

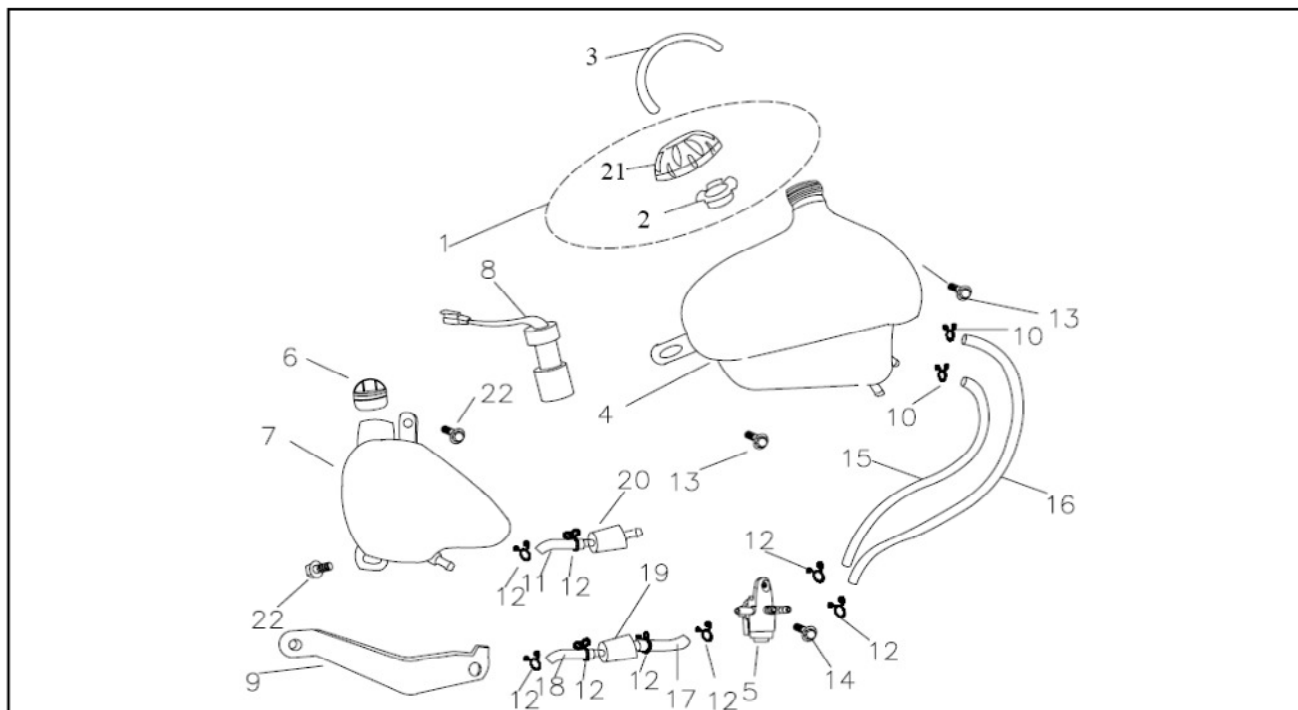


Item	Part No.		Part Name	Spec.	Q'ty
1	51400-3AR-00B	前避震器	Shock Absorber, Front	245mm	2
2	52400-3AR-000	後避震器	Shock Absorber, Rear	260mm	1
3	95801-10042-97K	六角緣面螺栓	Bolt, Hex. Flange	M10x42	2
4	90350U-10014	法蘭U型止鬆螺帽	Nut, Flange Insert Lock	M10×P1.25	4
5	92000-10040	六角螺栓	Bolt, Hex.	M10x40	2
6	95801-10035-9GL	六角緣面螺栓	Bolt, Hex. Flange	M10x35	2

F12, Axle/ Chain

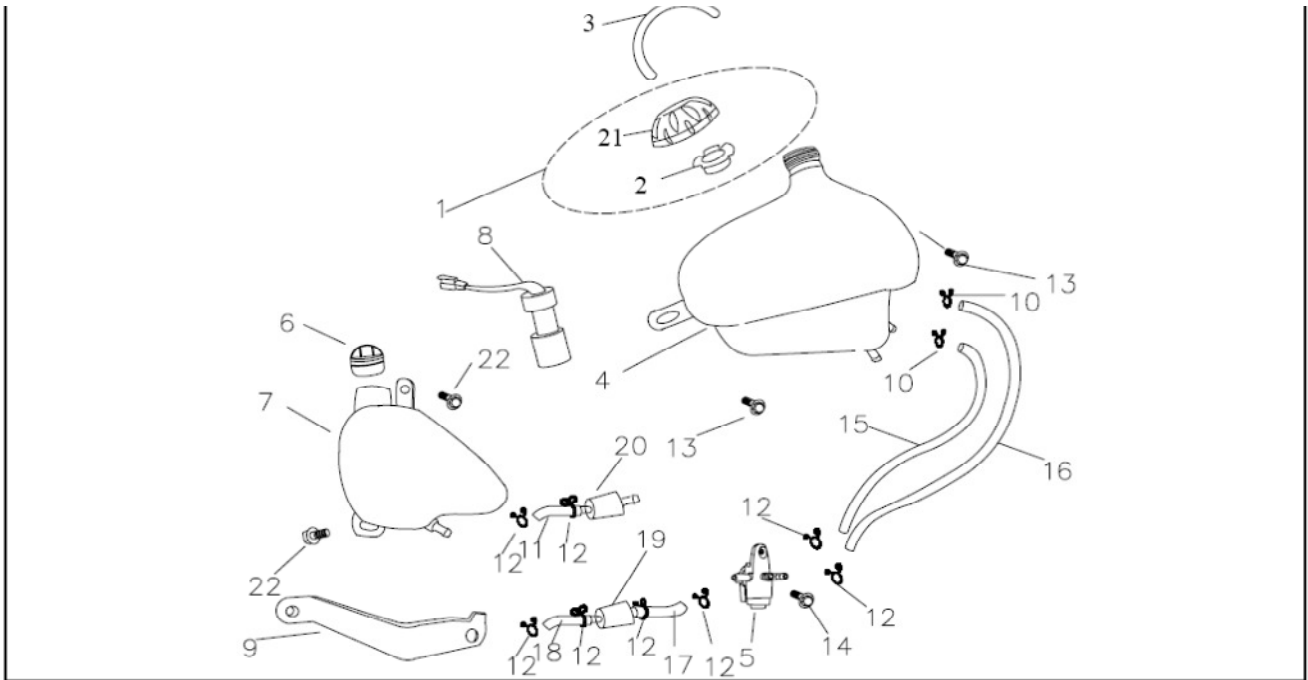


Item	Part No.		Part Name	Spec.	Q'ty
1	42300-3AR-001	後輪軸	Axle, Wheel	711L	1
2	42610-428028	後鍊輪總成	Bracket Ass'y , Sprocket		1
3	42615-3AR-000	後鍊輪固定座	Bracket, Sprocket		1
4	41200-428028	齒輪盤	Sprocket	428-28	1
5	95701-08025-07	六角緣面螺栓	Bolt, Hex. Flange	M8×25	3
6	SW 08013K	彈簧墊圈	Washer, Spring		3
7	42611-7A1-000-BK	鏈輪護蓋	Protector, Sprocket		1
8	40530-428086	鍊條	Chain	428-86	1
9	42330-3AR-000	後輪軸固定螺帽	Nut, Axle	M28xP1.5	2
10	42340-3AR-000	後輪軸固定環	Ring, Alx		1

F13 Fuel & Oil Tank

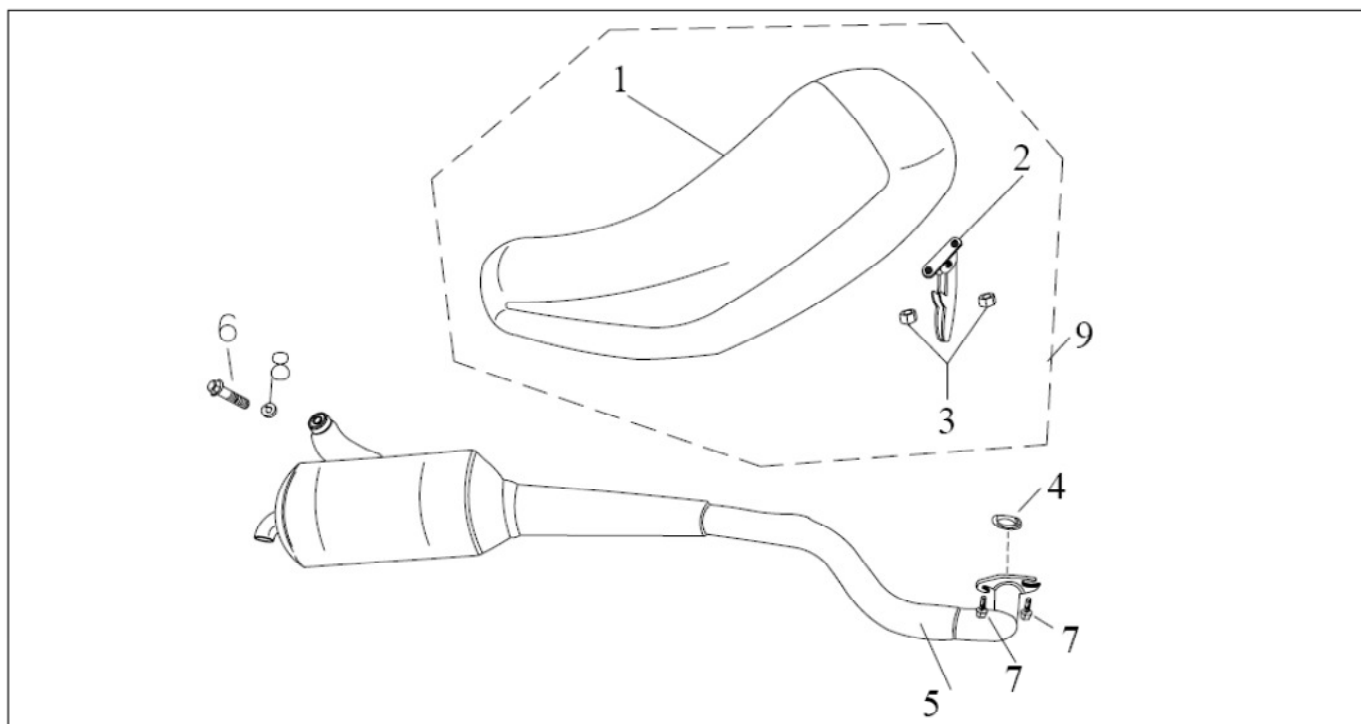
Item	Part No.		Part Name	Spec.	Q'ty
1	17620-3AR-000	汽油箱蓋總成	Cap Ass'y, Fuel Tank		1
2	17622-3AR-000	汽油箱蓋密合墊	Seal, Cap		1
3	17621-3AR-000	通氣管	Tube, Breathe	L=250	1
4	17510-3AR-000	汽油箱無認證	Tank, Fuel		1
5	16950-3AR-000	汽油杯	Cock Ass'y, Fuel		1
6	17720-3AR-000	機油箱蓋總成(標準型)	Cap, Oil Tank		1
7	17710-3AR-000	機油箱(標準型)	Tank, Oil		1
8	17711-3AR-000	機油浮筒	Level Gauge, Oil		1
9	17712-3AR-000	機油箱固定板(標準型)	Mounting Plate, Oil Tank		1
10	17631-3AR-000	汽油管止夾	Clip, Fuel Tube		2
11	17730-08050	機油管	Tube, Oil	L=50	1
12	16320-08008	止夾(小)	Clip, Fuel Tube	8×0.8	8
13	93404-06016-10G	六角螺栓(附墊圈)	Bolt ,Hex. Flange with Washer	M6×16	2
14	95701-06012-07	六角緣面螺栓	Bolt , Hex. Flange	M6×12	1
15	17630-08290	汽油管 A 長	Tube A, Fuel	L=340	1
16	17630-08235	汽油管 B 短	Tube B, Fuel	L=290	1
17	17630-08200	汽油管 C	Tube C, Fuel	L=150	1
18	17630-08080	汽油管 D	Tube D, Fuel	L=70	1
19	16300-A2C4-000	汽油過濾器(PM-13-008)	Filter, Fuel		1
20	17735-3AR-000	機油過濾器(YS-6031)	Filter, Oil		1

F13 Fuel & Oil Tank



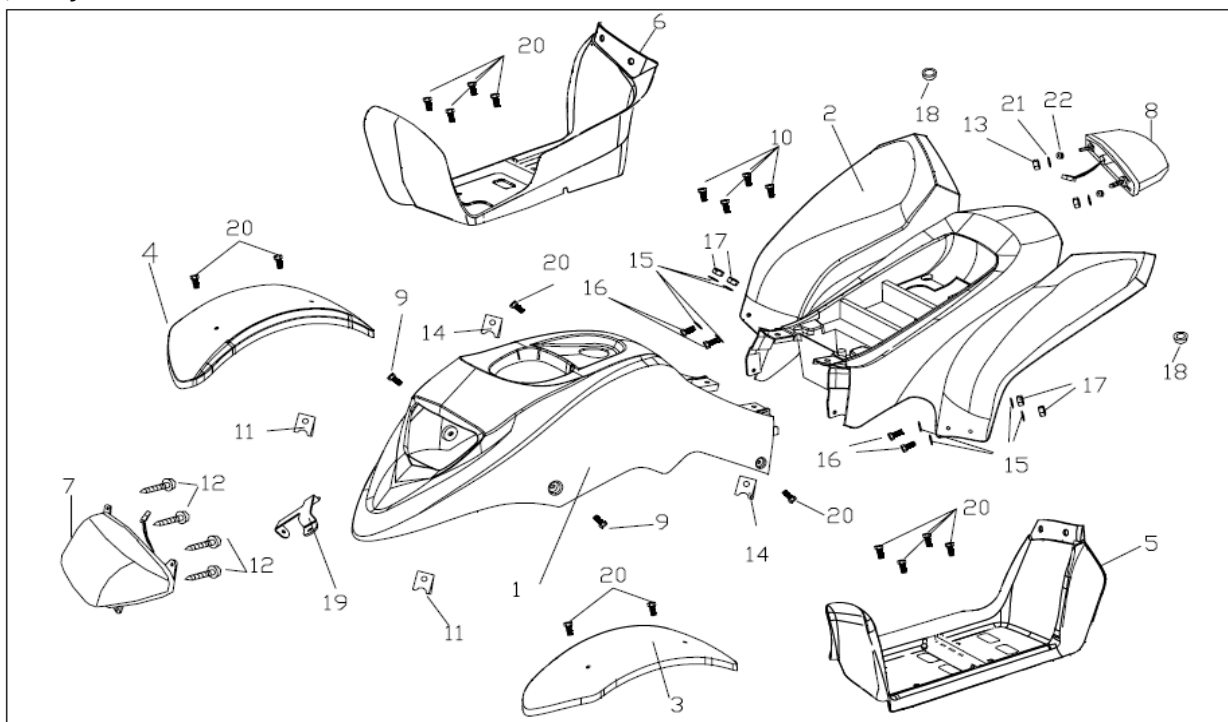
Item	Part No.		Part Name	Spec.	Q'ty
21	17623-3AR-000	汽油箱蓋	Cap, Fuel Tank		1
22	93404-06012-07	六角螺栓(附墊圈)	Bolt ,Hex. Flange with Washer	M6*12	2

F14, Seat & Ex. Pipe



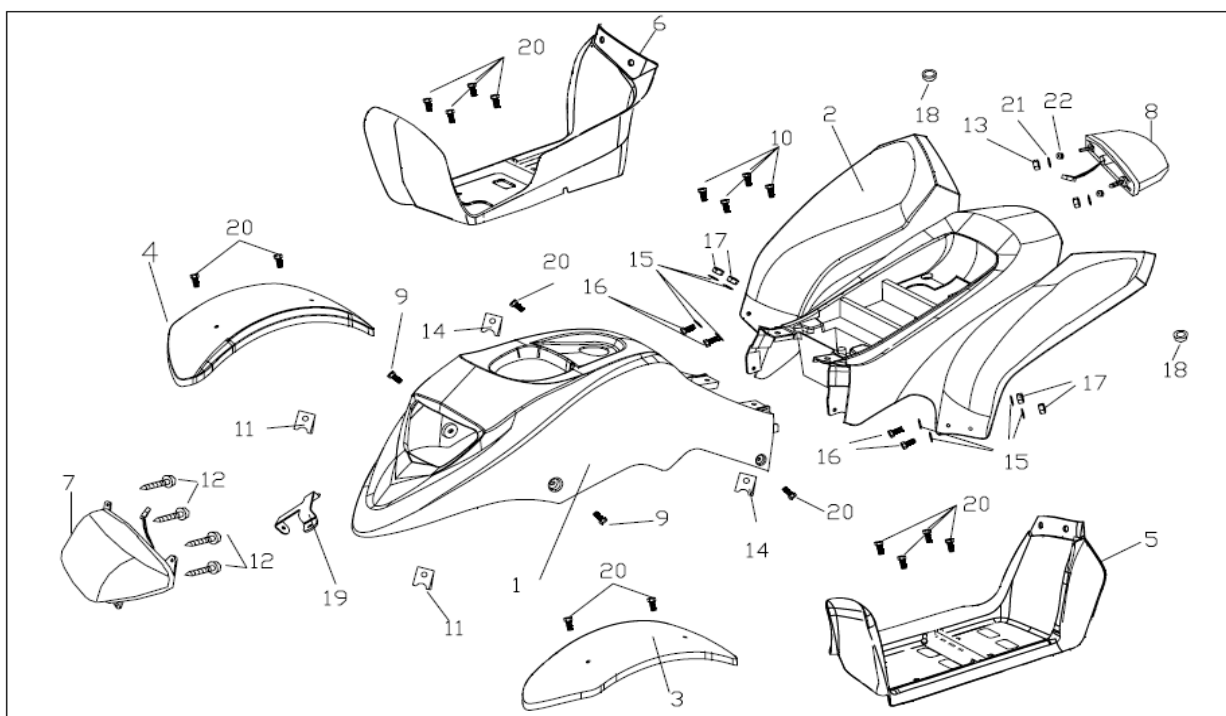
Item	Part No.		Part Name	Spec.	Q'ty
1	77200-3AR-0AP	坐墊	Seat		1
2	77230-3AR-000	坐墊開關總成	Lock Ass'y, Seat		1
3	94050-06000	六角緣面螺帽	Nut, Hex Flange with Serration	M6xP1.0	2
4	53420-3AR-00A	排氣管墊片	Gasket, Exhaust Pipe	圓形(標準型)	1
5	53400-3AR-00D	排氣管	Exhaust Pipe	(無認證,改良型)	1
6	95701-08035-07	六角緣面螺絲	Bolt , Hex. Flange	M8*35	1
7	90149-06012-OG	六角十字螺絲(排氣管用)	Bolt, Exhaust pipe	M6*12	2
8	SW 08015 K	彈簧墊圈	Washer, Spring		1
9	77000-3AR-0AP	座墊總成	Seat Ass'y	PRO SHARK 黑銀	1

F15, Body Cover



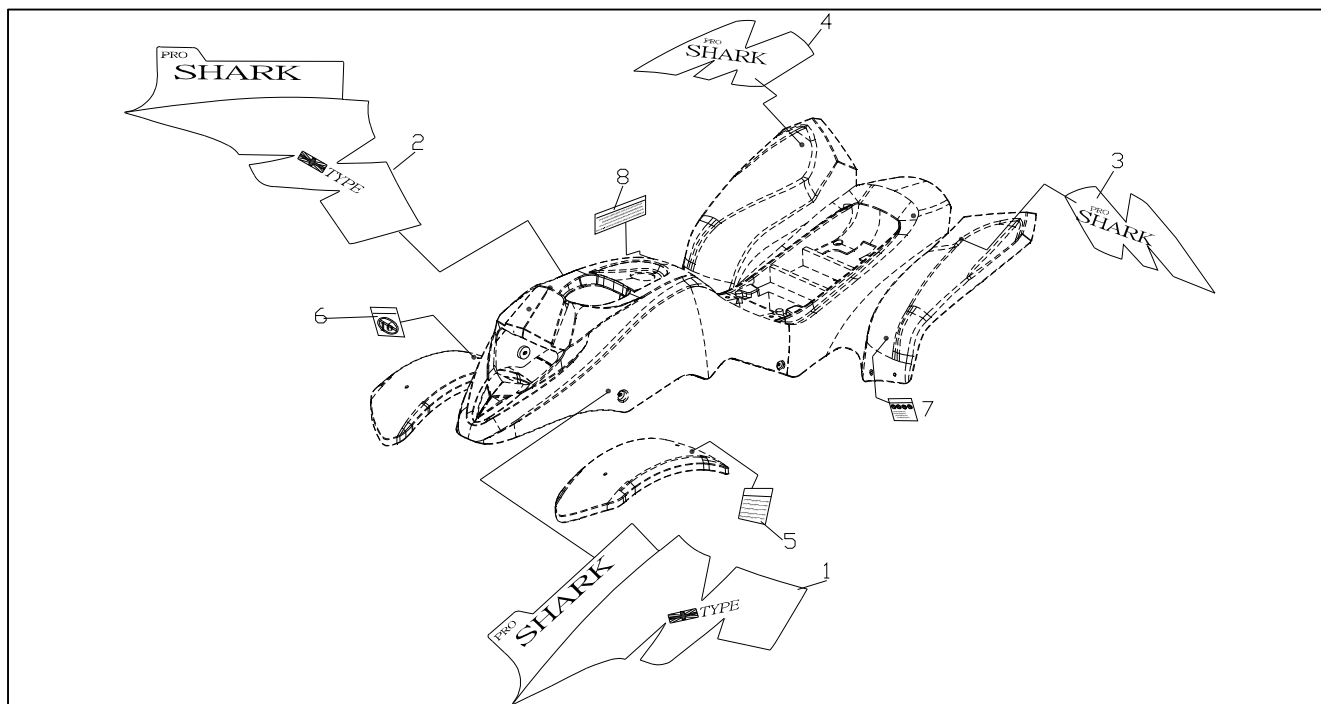
Item	Part No.		Part Name	Spec.	Q'ty
1	61320-3AR-BK0	前車殼	Body Cover, Front	黑	1
	61320-3AR-BL0	前車殼	Body Cover, Front	藍	1
	61320-3AR-WH0	前車殼	Body Cover, Front	白	1
	61320-3AR-RE0	前車殼	Body Cover, Front	紅	1
	61320-3AR-OR0	前車殼	Body Cover, Front	橘	1
	61320-3AR-YE0	前車殼	Body Cover, Front	黃	1
2	64340-3AR-BK0	後車殼	Body cover, Rear	黑	1
	64340-3AR-BL0	後車殼	Body cover, Rear	藍	1
	64340-3AR-WH0	後車殼	Body cover, Rear	白	1
	64340-3AR-RE0	後車殼	Body cover, Rear	紅	1
	64340-3AR-OR0	後車殼	Body cover, Rear	橘	1
	64340-3AR-YE0	後車殼	Body cover, Rear	黃	1
3	61200-3AR-BK0	左土除標準	Fender, L.	黑	1
	61200-3AR-BL0	左土除標準	Fender, L.	藍	1
	61200-3AR-WH0	左土除標準	Fender, L.	白	1
	61200-3AR-RE0	左土除標準	Fender, L.	紅	1
	61200-3AR-OR0	左土除標準	Fender, L.	橘	1
	61200-3AR-YE0	左土除標準	Fender, L.	黃	1
4	61100-3AR-BK0	右土除標準	Fender, R.	黑	1
	61100-3AR-BL0	右土除標準	Fender, R.	藍	1
	61100-3AR-WH0	右土除標準	Fender, R.	白	1
	61100-3AR-RE0	右土除標準	Fender, R.	紅	1
	61100-3AR-OR0	右土除標準	Fender, R.	橘	1
	61100-3AR-YE0	右土除標準	Fender, R.	黃	1

F15, Body Cover



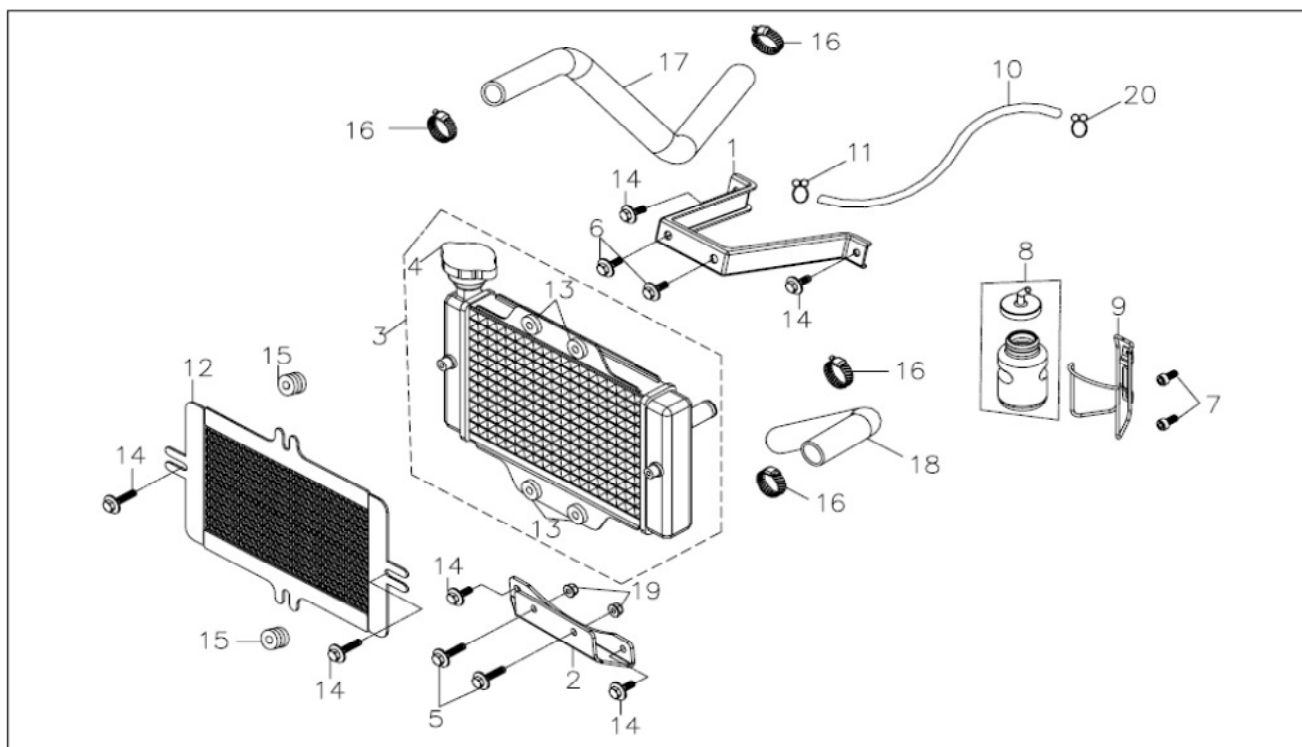
Item	Part No.		Part Name	Spec.	Q'ty
5	64420-3AR-00A	左腳踏板	Enclosed Footrest, L.	(塑膠)	1
6	64410-3AR-00B	右腳踏板	Enclosed Footrest, R.	(有孔塑膠)	1
7	33310-3AR-000	大燈	Light, Head		1
8	33701-3AR-000	尾燈	Light, Tail		1
9	93404-06012-07	六角螺栓(附墊圈)	Bolt ,Hex. Flange with Washer	M6*12	2
10	90005-06012-17	十字大平頭螺栓	Bolt, Flate	M6*12	4
11	90302-VSN4-C	夾片	Plate, Spring		2
12	TT-104120-U3	十字大平頭螺絲(自攻)	Screw, Tapping	M4*12	4
13	90350U-06000-K	法蘭U型止鬆螺帽	Nut, Flange Insert Lock	M6*1.0	2
14	90344-06000K	夾片	Plate, Spring		2
15	FW05014 K	平面墊圈	Washer, Plate	5.3*14*0.8	8
16	90005-05015-17	十字大平頭螺栓	Bolt, Flate	M5*15	4
17	NN05008K	法蘭U型止鬆螺帽	Nut, Flange Insert Lock	M5*0.8	4
18	45535-3AR-000	腳剎車踏板防震襯套	Rubber, Damper		2
19	50720-3AR-000	頭燈固定座	Bracket, Head Light		1
20	93404-06016-10G	六角螺栓附墊圈	Bolt ,Hex. Flange with Washer	M6*16	14
21	94101-0622010	平面墊圈	Washer, Plate	6*22*1	2
22	50534-3AR-000	吸震襯套	Rubber Absorber, Tail Light		2

F16, Sticker



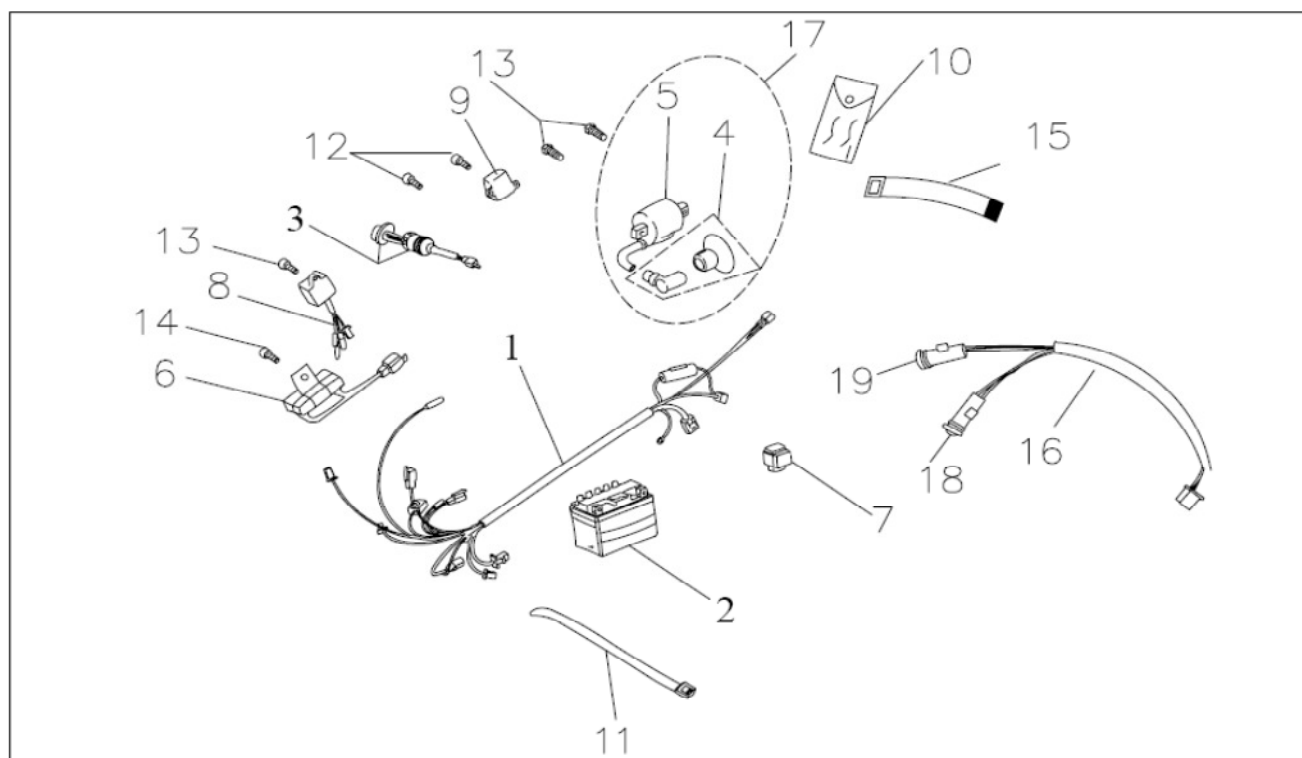
Item	Part No.		Part Name		Q'ty
1	61321-3AR-SIO	貼紙側蓋左前	Side Sticker, L.	PRO SHARK	1
2	61322-3AR-SIO	貼紙側蓋右前	Side Sticker, R.	PRO SHARK	1
3	64341-3AR-SIO	貼紙側蓋左後	Rear Sticker, L.	PRO SHARK	1
4	64342-3AR-SIO	貼紙側蓋右後	Rear sticker, R.	PRO SHARK	1
5	64511-3AR-000	車輛資料警告貼紙	Vehicle, Waring Lebel		1
6	64512-3AR-016	16歲警告貼紙	Age, Waring Lebel		1
7	61325-3AR-000	操作事項警告貼紙禁止乘載	Operating, Waring Lebel		1
8	64513-3AR-000	排氣管警告貼紙	Waring Lebel, Muffler		1

F17, Radiator



Item	Part No.		Part Name	Spec.	Q'ty
1	19120-3AR-BK0	水箱上架	Up Bracket, Radiator		1
2	19110-3AR-00A	水箱下架	Bottom Bracket, Radiator		1
3	15231-7A1-A0B	水箱	Radiator		1
4	15232-7A1-000	水箱蓋	Cap, Liquid Cooler	附屬品	1
5	93404-06025-07G	六角螺栓(附墊圈)	Bolt ,Hex. Flange with Washer	M6*25	2
6	91750-06020-10G	六角螺栓(附墊圈)	Bolt ,Hex. Flange with Washer	M6*20	2
7	91000-06010-07	六角承窩螺栓	Bolt, Hex. Socket	M6×10	2
8	19200-3AR-000	副水箱總成	Aux. Tank Kit, Liquid		1
9	19210-3AR-00A	副水箱架(塑膠)	Bracket, Aux. Liquid Tank		1
10	95005-07300	洩壓管	Tube, Overflow	L=1150	1
11	16320-08008	止夾(小)	Clip	8*0.8	1
12	19130-3AR-000	水箱罩	Protective, Radiator		1
13	15234-3AR-000	水箱吸震襯套	Rubber Absorber, Radiator	附屬品	4
14	93404-06012-07	六角螺栓(附墊圈)	Bolt ,Hex. Flange with Washer	M6*12	6
15	50534-3AR-000	吸震襯套	Rubber Absorber, Tail Light		2
16	16411-A2DL-000	管束	Clamp, Hose		4
17	15233-162451	冷卻水管A	Hose A, Liquid	L=451	1
18	15233-162435	冷卻水管C	Hose C, Liquid	L=435	1
19	90350-06U-10B	法蘭U型止鬆螺帽	Nut, Flange Insert Lock	M6*P1.0	2
20	16320-10012	止夾(大)	Clip	10*1.2	1

F18, Electrical



Item	Part No.		Part Name	Spec.	Q'ty
1	32100-3AR-000	主配線無認證	Wire, Electric		1
2	31500-3AR-000	電瓶(5號)	Battery	5AH	1
3	35010-3AR-000	電源鎖	Switch, Main	00-001	1
4	30700-3AR-000	火星塞帽蓋	Spark Plug Ass'y		1
5	30500-3AR-000	火星塞頭	Coil, Ignition		1
6	30800-3AR-000	電阻器	Resistor	8.5Ω	1
7	38501-3AR-000	啟動電繹	Starter Relay Kit		1
8	30410-3AR-00A	C.D.I電子元件	C.D.I Unit		1
9	31600-3AR-000	穩壓整流器	Rectifier & Regulator		1
10	89010-3AR-000	工具包	Tool		1
11	89020-3AR-000	束帶	Strap	ALT-200MM	6
12	93500-05012	十字圓頭螺栓	Bolt, Pan Phillips	M5×12	2
13	95701-06016-07	六角緣面螺栓	Bolt, Hex. Flange	M6x16	3
14	95701-06012-07	六角緣面螺栓	Bolt, Hex. Flange	M6×12	1
15	89011-3AR-000	工具包束帶	Band, Tool		1
16	37223-3AR-000	指示燈線	Warning, Lamp		1
17	30600-3AR-000	高壓線圈總成	Coil Ass'y, Ignition		1
18	37224-3AR-000	機油指示燈殼	Sump. Lamp Body Cover		1
19	37225-3AR-000	水溫指示燈殼	Coolant temp Lamp Body Cover		1