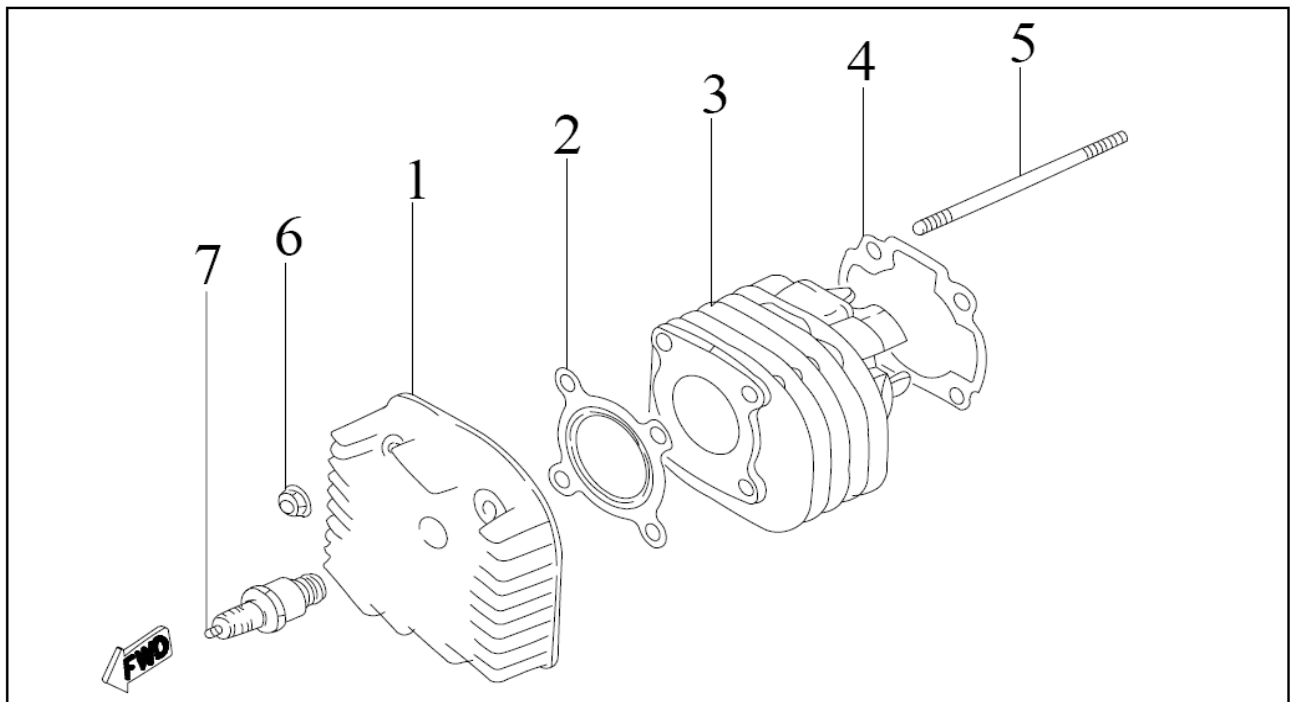
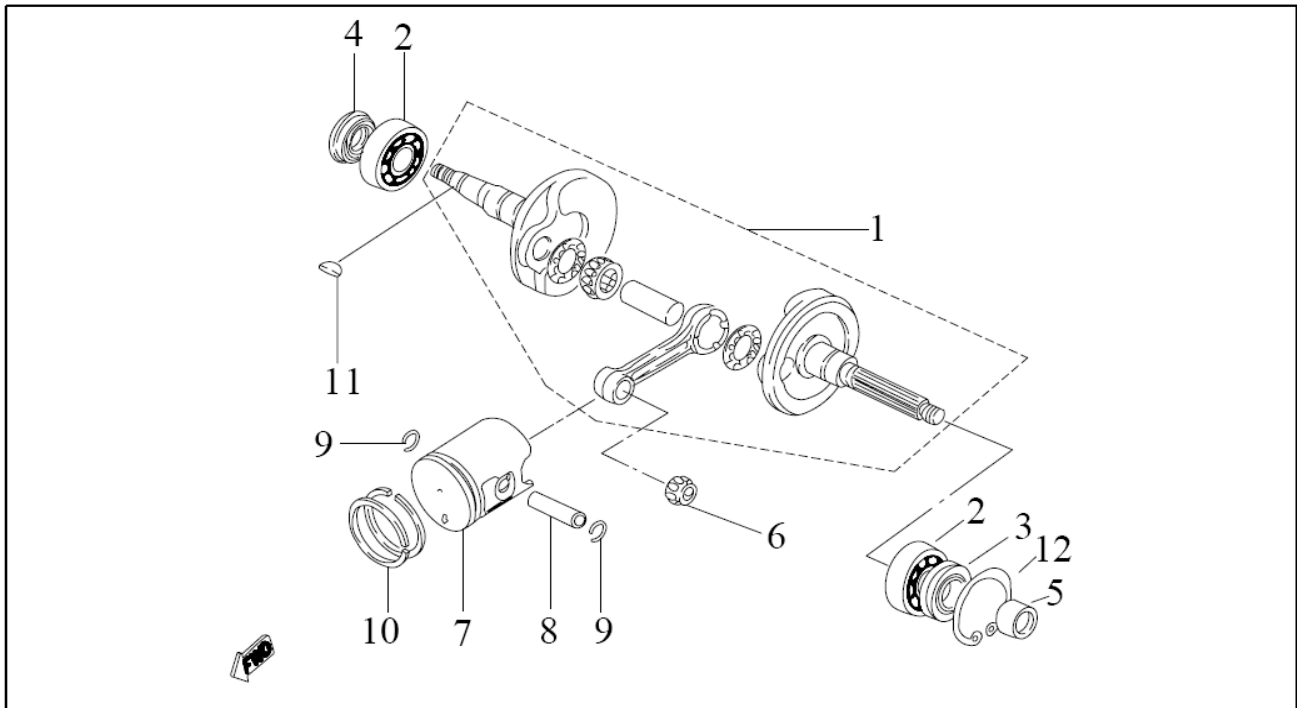


E-1, Cylinder, Cylinder Head & Spark Plug (GOES50)

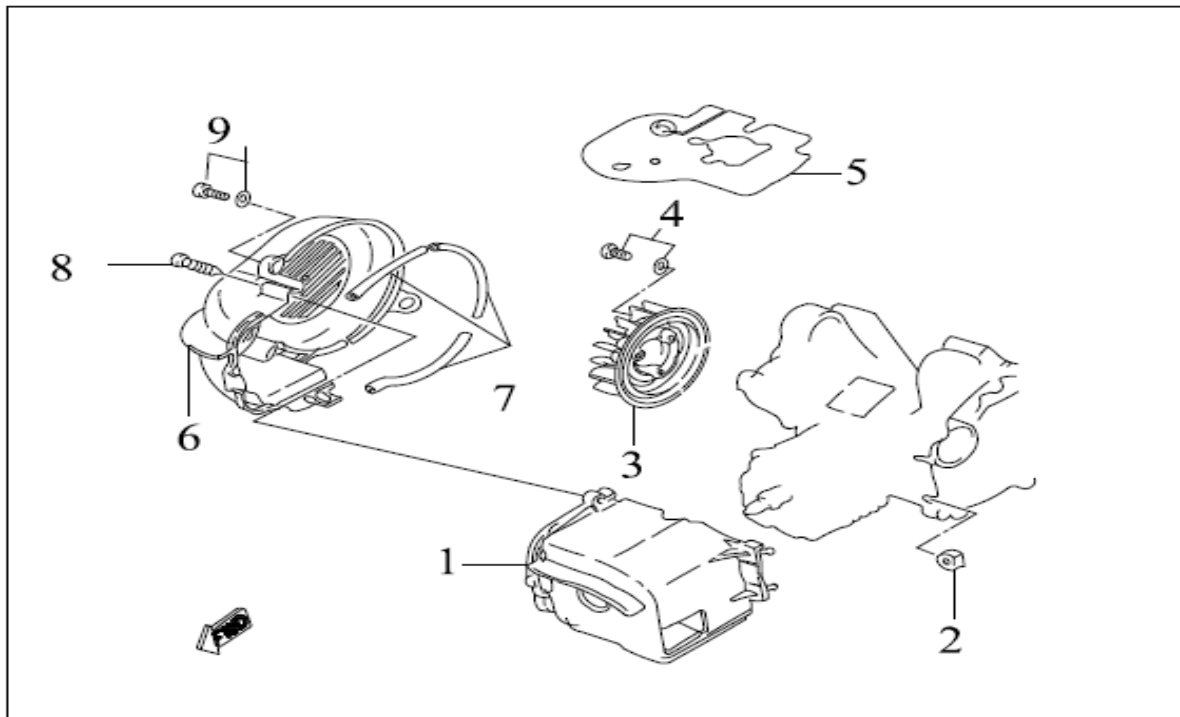


Item	Part No.	Part Name	Spec.	Q'ty	Note
1	12200-A2B-000	Head , Cylinder	40mm	1	
2	12251-A2B-000	Gasket, Cylinder Head	40mm	1	
3	12100-A2B-000	Cylinder	40mm	1	
4	12191-A2B-000	Gasket, Cylinder	0.5mm	1	
5	90800-07109	Bolt, Stud	M7x109	4	
6	94000-07100	Nut	M7x1.0	4	
7	98069-NGK-BP7HS	Plug, Spark	BP7HS	1	

E-2, Piston & Crankshaft (GOES50)

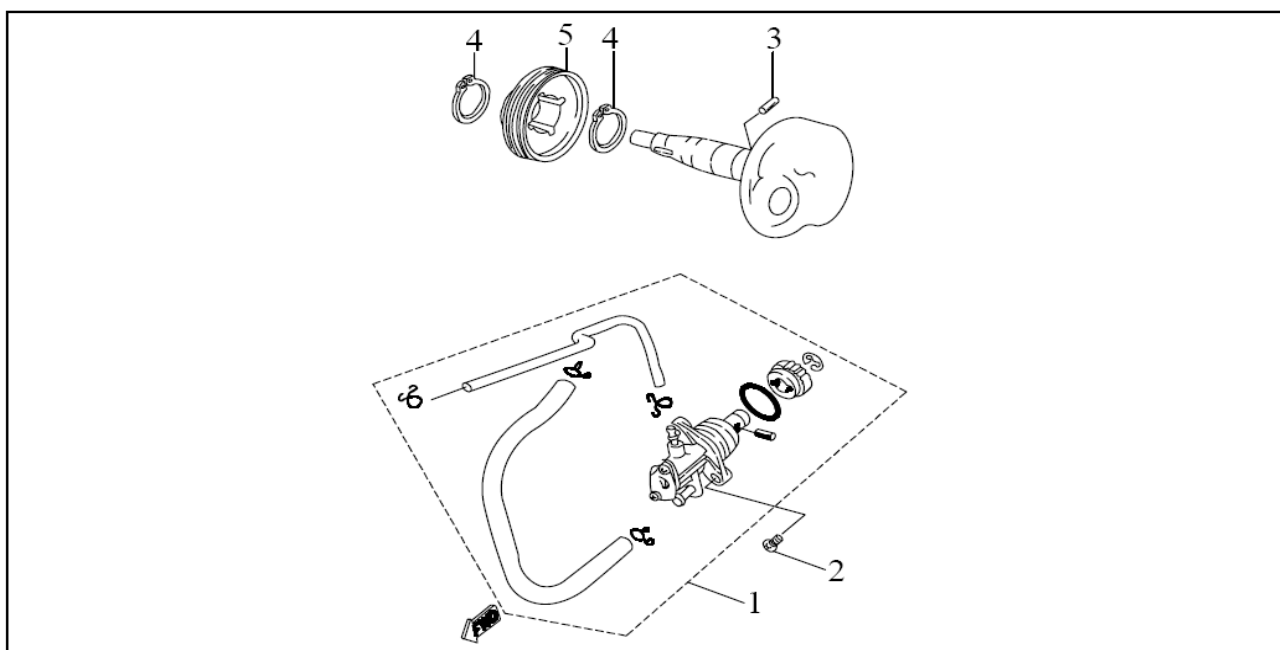
Item	Part No.	Part Name	Spec.	Q'ty	Note
1	13000-A2B-000	Crankshaft Ass'y	S=39.2	1	
2	96200-6204C3	Ball Bearing, Crankshaft	6204C3	2	
3	91200-20428	Oil Seal, L. Crank	20x42/43x8/9	1	
4	91200-20306	Oil Seal, R. Crank	20x30/33.5x6	1	
5	13200-A2B-000	Collar	15x20x12	1	
6	96110-KBK10-A	Bearing, Needle	10x14x12.5	1	
7	13300-A2B-000	Piston (std)	40mm	1	
8	13400-A2B-000	Pin, Piston	6x10x33	1	
9	13410-A2B-000	Clip, Piston Pin		2	
10	13310-A2B-000	Rings, Piston (std)	40mm	1	
11	13010-A2C4-000	Key, Woodruff	3x13	1	
12	90500-RTW42	Circlip	RTW-42	1	

E-3, Fan & Shroud (GOES50)

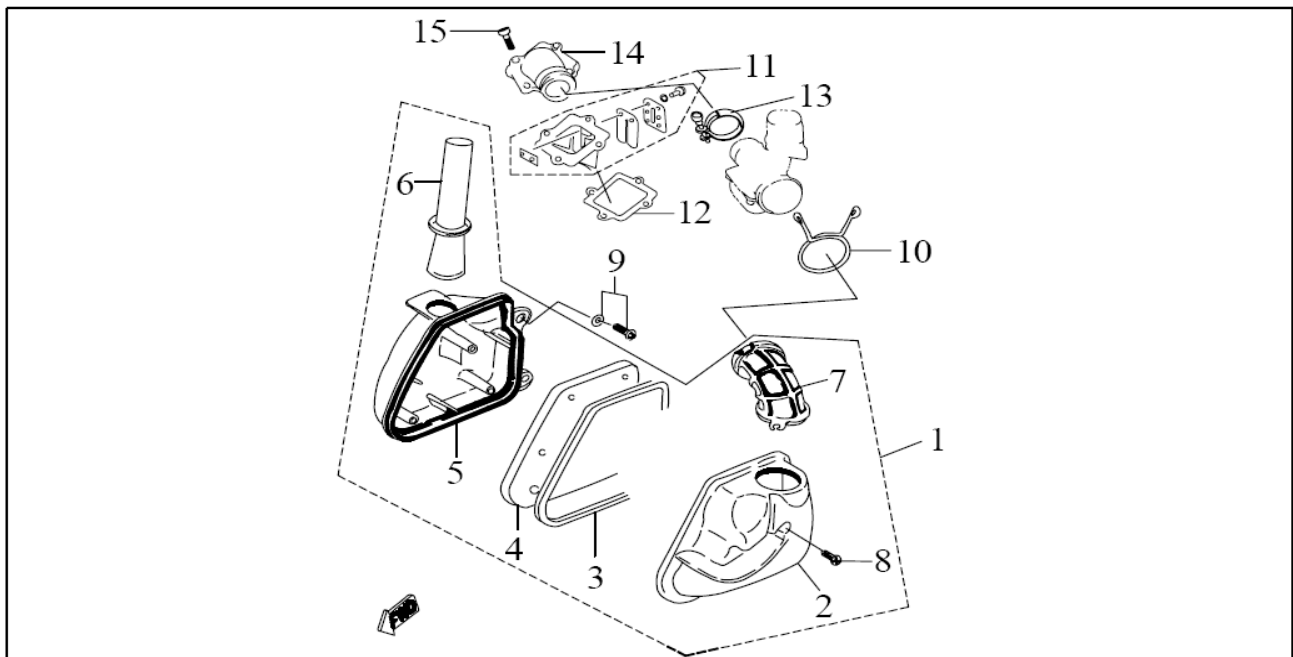


Item	Part No.	Part Name	Spec.	Q'ty	Note
1	17100-A2B-000	Air Shroud, Cylinder		1	
2	17110-A2C4-000	Grommet		2	
3	18100-A2C4-000	Fan		1	
4	93710-06016	Bolt, W/Washer	M6x16	3	
5	17210-A2C4-000	Deflector		1	
6	18210-A2C4-000	Cover, Fan		1	
7	18211-A2C4-000	Damper, Fan Cover		3	
8	95500-06040	Screw, Tapping	M6x40	1	
9	93710-06020	Bolt, W/Washer	M6x20	2	

E-4, Oil Pump (GOES50)

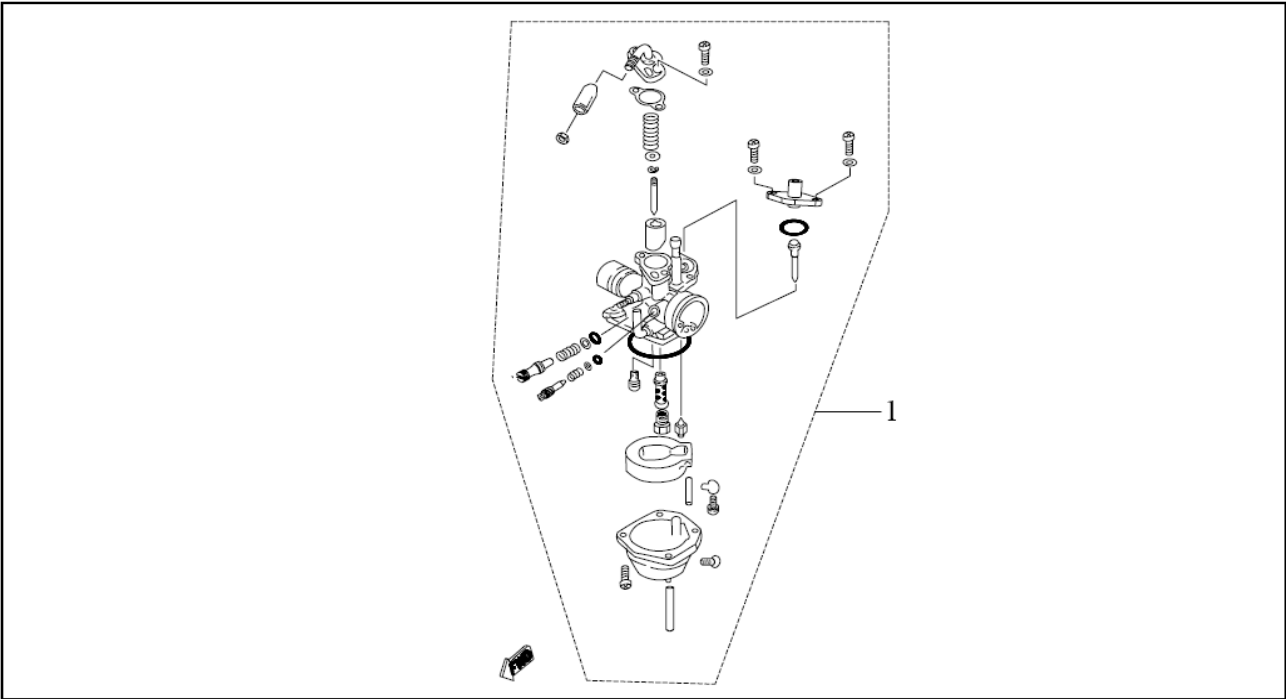


Item	Part No.	Part Name	Spec.	Q'ty	Note
1	15100-A2C4-000	Pump, Oil		1	
2	93700-05016	Bolt, Pan Head	M5x16	2	
3	96171-03118	Pin	3x11.8	1	
4	90600-S19	Circlip	S19	2	
5	15110-A2C4-000	Gear, Pump Drive		1	

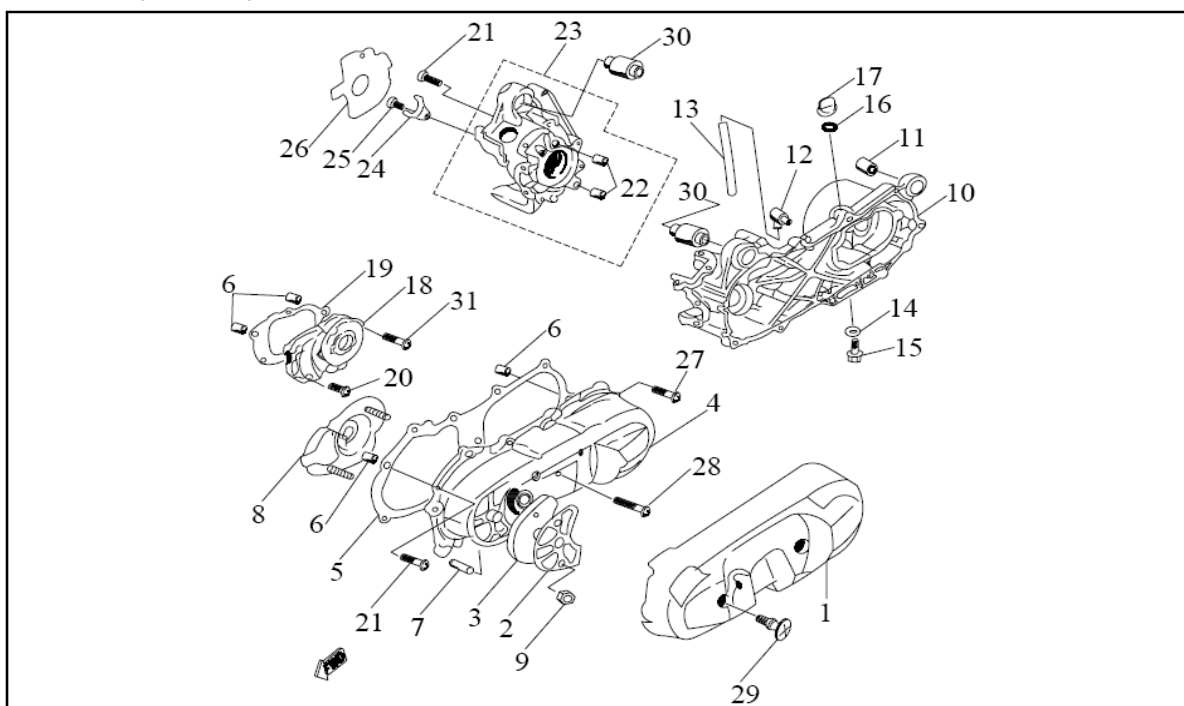
E-5, Air Cleaner & Reed Valve (GOES50)

Item	Part No.	Part Name	Spec.	Q'ty	Note
1	17300-A2C4-000	Air cleaner Ass'y		1	
2	17310-A2C4-000	Cap, Air Cleaner		1	
3	17311-A2C4-000	Seal		1	
4	17320-A2C4-000	Filter Element, Air Cleaner		1	
5	17330-A2C4-000	Case, Air Cleaner		1	
6	17331-A2C4-000	Duct		1	
7	17332-A2C4-000	Joint, Air Cleaner		1	
8	95500-05025	Screw, Tapping	5x25	3	
9	93710-06020	Bolt, W/Washer	M6x20	2	
10	17333-A2C4-000	Clip		1	
11	14710-A2B-000	Reed Valve Ass'y		1	
12	14711-A2C4-000	Gasket, Reed Valve		1	
13	16422-A2C4-000	Band, Intake Manifold		1	
14	16410-A2C4-000	Manifold, Intake		1	
15	91000-06020	Hex. Socket Bolt	M6x20	4	

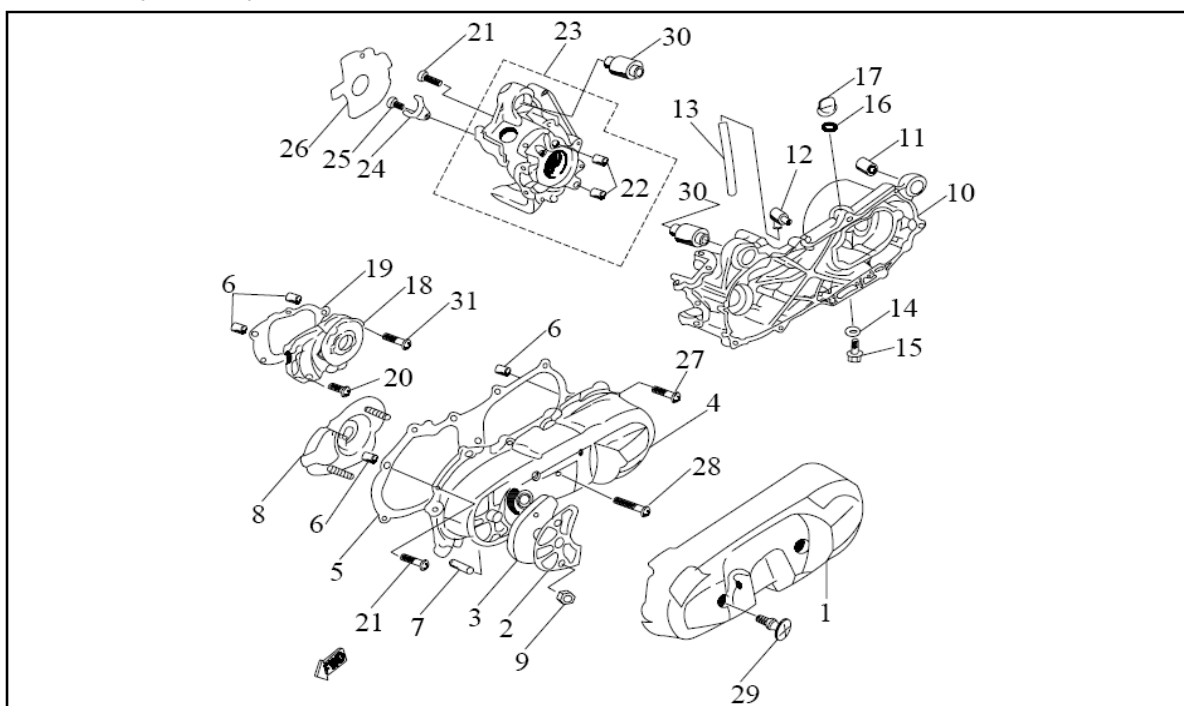
E-6, Carburetor (GOES50)



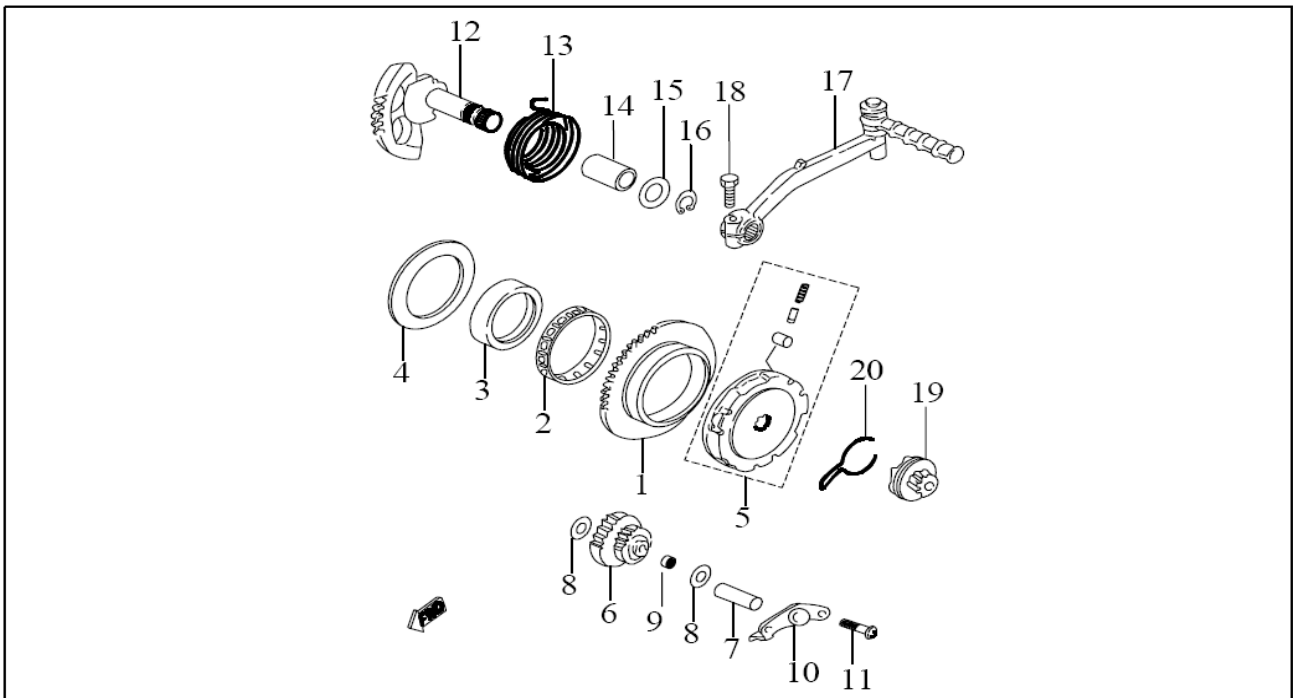
Item	Part No.	Part Name	Spec.	Q'ty	Note
1	16100-A2B-001	Carburetor Ass'y (auto. chock)		1	

E-7, Crankcase (GOES50)

Item	Part No.		Spec.	Q'ty	Note
1	11341-A2C4-000	Protector, L. Crankcase Cover		1	
2	11342-A2C4-000	Guide, Air Filter		1	
3	11343-A2C4-00A	Filter Element, L. Crankcase		1	
4	11340-A2C4-000	Cover, L. Crankcase		1	
5	11395-A2C4-000	Gasket, L. Crankcase		1	
6	90703-081014	Pin, Dowel	10x14	4	
7	11344-A2C4-000	Shaft	8x31	1	
8	11345-A2C4-000	Fixed Plate, Filter Element		1	
9	94000-06100	Hex. Acorm Washer Face Nut	M6xP1.0	3	
10	11200-A2B-000	Crankcase, L.		1	
11	97350-082021	Bush	8x20x21	1	
12	11210-A2C4-000	Breather		1	
13	11211-A2C4-000	Hose, Breather	5x100	1	
14	90442-081515	Washer, Copper	8x15x1.5	1	
15	92100-08016	Hex. Washer Face Bolt	M8x16	1	
16	91300-138024	O-Ring	13.8x2.4	1	

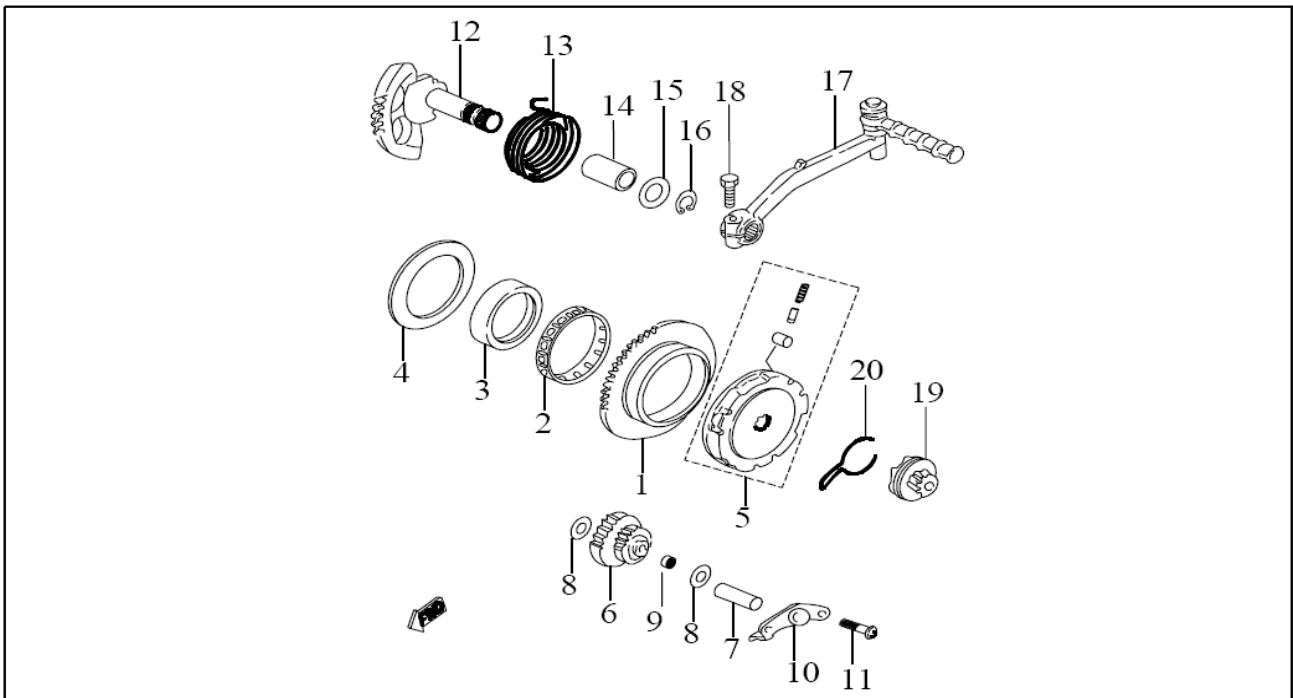
E-7, Crankcase (GOES50)

Item	Part No.		Spec.	Q'ty	Note
17	11212-A2C4-000	Plug, Oil		1	
18	11400-A2C4-000	Cover, Transmission		1	
19	11410-A2C4-000	Gasket, Transmission		1	
20	91000-06025	Hex,Socket Bolt	M6x25	3	
21	91000-06035	Hex,Socket Bolt	M6x35	8	
22	90703-101216	Pin, Dowel	12x16	2	
23	11100-A2B-000	Crankcase, R.		1	
24	11110-A2C4-000	Holder		1	
25	91000-06010	Hex,Socket Bolt	M6x10	1	
26	31121-A2C4-000	Gasket, A.C.G		1	
27	91000-06025	Hex,Socket Bolt	M6x25	8	
28	91000-06065	Hex,Socket Bolt	M6x65	1	
29	11346-A2C4-000	Bolt, Special		2	
30	96210-6003ZZ-A	Bearing, Ball	6003ZZ	2	
31	91000-06035	Hex,Socket Bolt	M6x35(耐膠)	2	

E-8, Starter (GOES50)

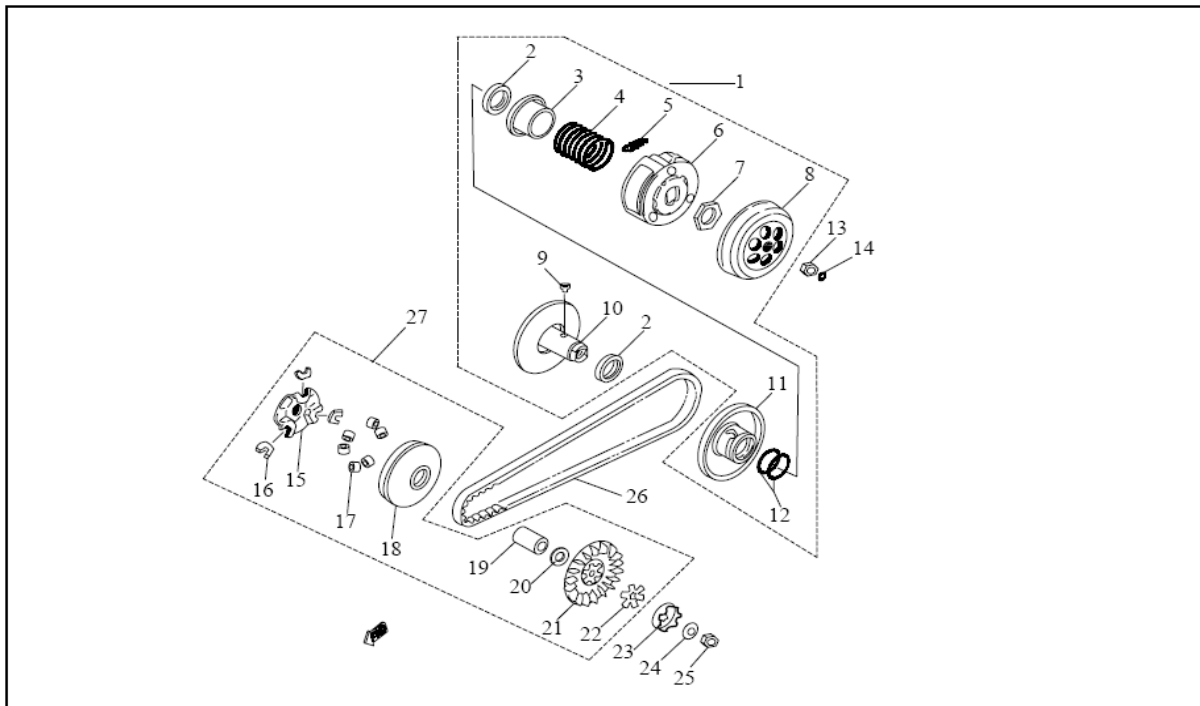
Item	Part No.	Part Name	Spec.	Q'ty	Note
1	22110-A2C4-0A0	Wheel, Starter	68T	1	
2	96140-555912	Bearing, Needle	55×59×12.5	1	
3	11213-A2C4-000	Boss		1	
4	90426-557606	Washer, Plate	55x76X0.5	1	
5	22100-A2B-0A0	Starter Clutch Ass'y		1	
6	22120-A2C4-000	Idle Gear Ass'y	20/47T	1	
7	11344-A2C4-000	Shaft, Idle Gear	8x31	1	
8	90426-081620	Washer, Plate	8.2x16x2	2	
9	96180-081210	Bearing, Needle	HK8x12x10	1	
10	22121-A2C4-000	Plate, Idle Gear		1	
11	91000-06010	Hex,Socket Bolt	M6x10	2	
12	28211-A2C4-000	Kick Shaft Ass'y		1	
13	28261-A2C4-000	Spring, Torsion		1	
14	28251-A2C4-000	Bush, Kick Shaft	15x20x30	1	
15	90426-152810	Washer, Plate	15.2x28x1	1	

E-8, Starter (GOES50)

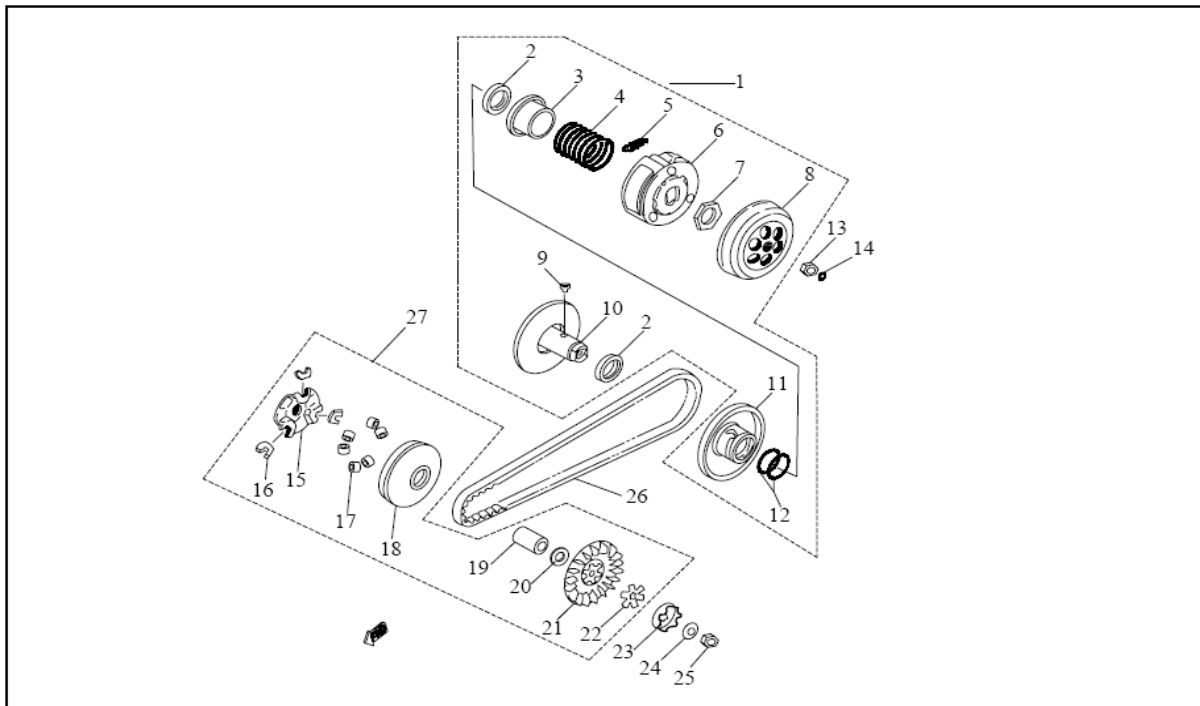


Item	Part No.	Part Name	Spec.	Q'ty	Note
16	90600-STW15	Circlip	STW-15	1	
17	28300-A2C4-00C	Kick Shaft Ass'y		1	
18	92101-06022-0G	Hex. Bolt	M6x25	1	
19	28221-A2C4-000	Kick Pinion Ass'y		1	
20	28222-A2C4-000	Clip, Kick Pinion		1	

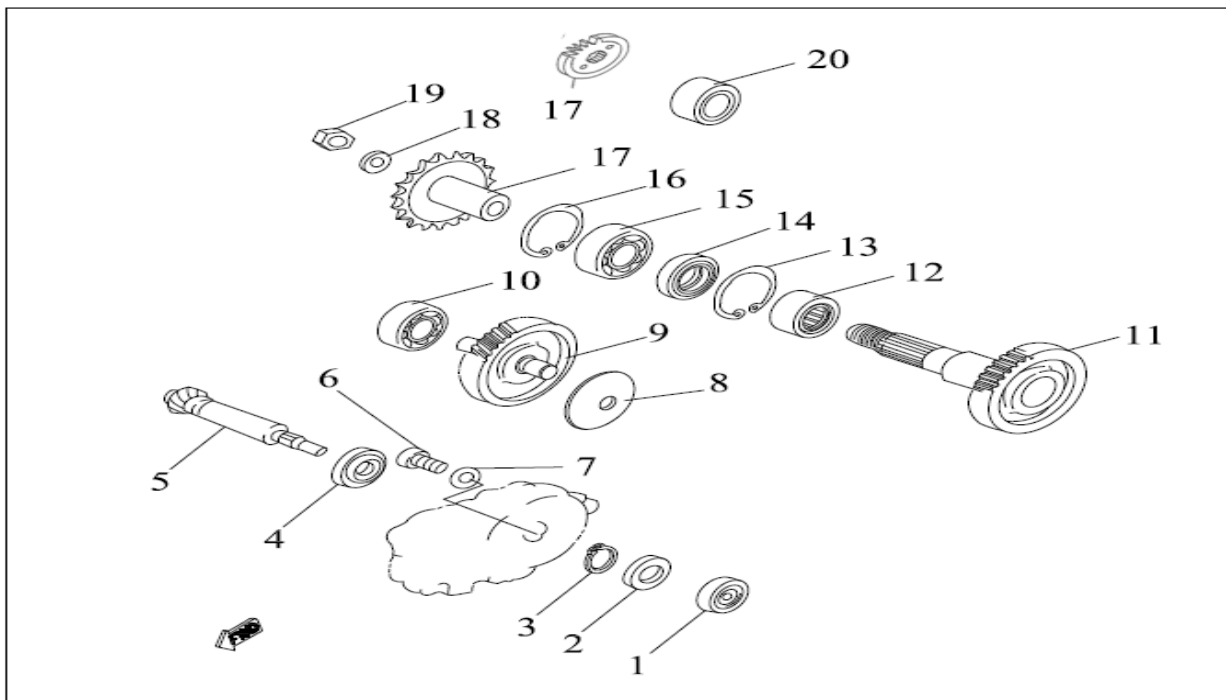
E-9, Clutch (GOES50)



Item	Part No.	Part Name	Spec.	Q'ty	Note
1	22300-A2B-000	Secondary Sheave Ass'y		1	
2	91200-33394	Seal, Oil		2	
3	22311-A2C4-000	Seat, Secondary Spring		1	
4	22312-A2B-000	Spring, Compression	f4x75mm	1	
5	22331-A2B-000	Spring, Clutch Weight	f2x6coils	3	
6	22330-A2C4-000	Carrier Ass'y, Clutch	f112	1	
7	22332-A2C4-000	Nut, Clutch		1	
8	22340-A2C4-000	House, Clutch		1	
9	22313-A2C4-000	Bearing, Ball		2	
10	22310-A2C4-000	Fix Sheave Comp., Secondary		1	
11	22320-A2C4-000	Sliding Sheave, Secondary		1	
12	91300-360020	Oil-Ring		2	
13	22341-10100	Hex. Acorn Nut	M10xP1.0	1	
14	91300-125030	O-Ring	6.45x3.1	1	
15	22411-A2B-000	Plate, Cam		1	
16	22412-A2C4-000	Slider, Cam Plate		3	

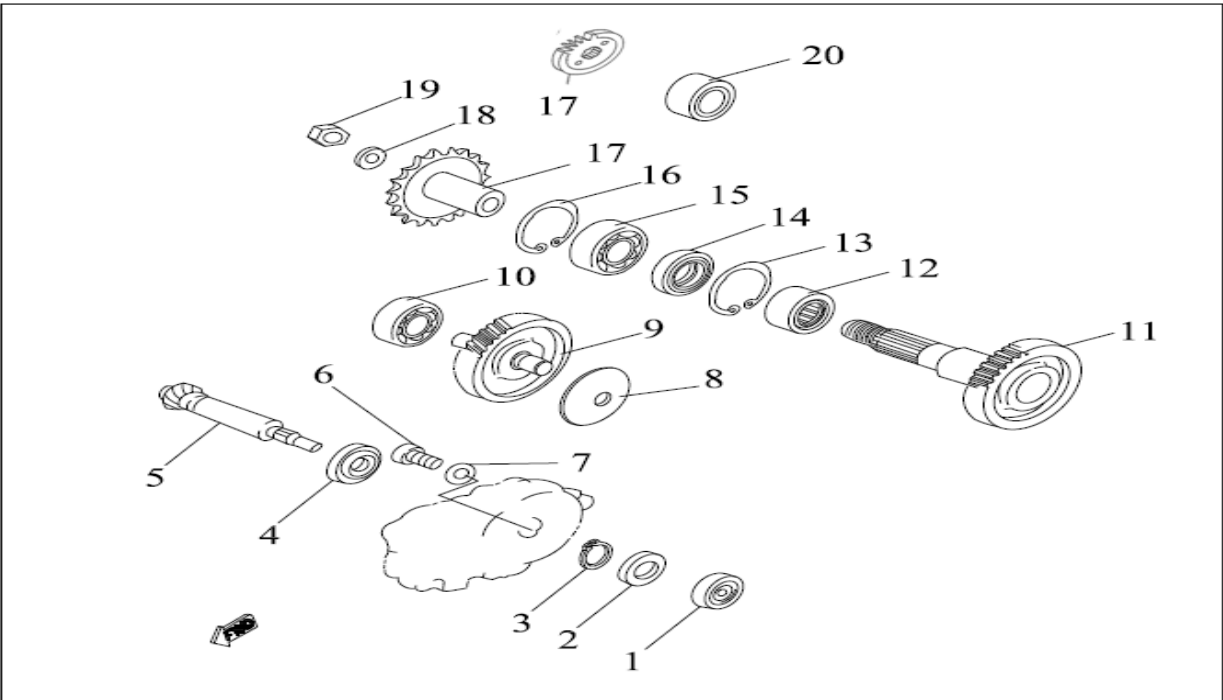
E-9, Clutch (GOES50)

Item	Part No.	Part Name	Spec.	Q'ty	Note
17	22413-A2C4-065	Weight	6.5g	6	
18	22410-A2B-000	Sliding Sheave, Primary		1	
19	22414-A2B-000	Collar	13x18x38	1	
20	22415-A2B-000	Sliding Sheave Washer, Clam	13.5x18x1.0	1	
21	22420-A2B-000	Fixed Sheave, Primary		1	
22	22421-A2B-000	Washer, Clam		1	
23	22422-A2B-000	Clutch, Oneway		1	
24	94111-102426	Washer, Conical Spring	10.5x24x2.6	1	
25	94100-10125	Hex. Acorn Nut	M10xP1.25	1	
26	22500-A2C4-000	Belt, Drive	780x16.5x30	1	
27	22400-A2B-065	Sliding Sheave, Ass'y	6.5g	1	

E-10, Transmission (GOES50)

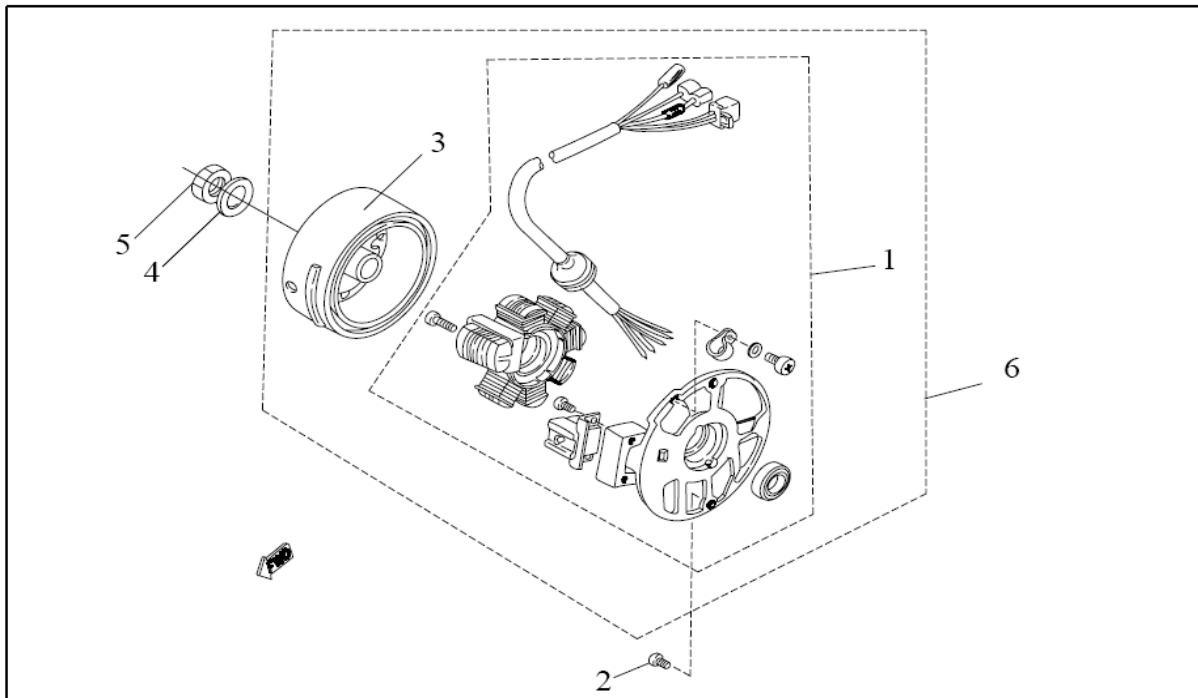
Item	Part No.	Part Name	Spec.	Q'ty	Note
1	96210-638RD-A	Bearing, Ball	638RD	1	
2	91200-172855	Seal, Oil	17x28x5.5	1	
3	90500-S17	Circlip	S-17	1	
4	96210-6003	Bearing, Ball	6003	1	
5	23610-A2C4-0A0	Drive Gear, Primary	15T	1	
6	91000-06010	Hex,Socket Bolt	M6x10	1	
7	90426-061912	Washer, Plate	6.5x19x1.2	1	
8	94111-126005	Washer, Conical Spring	12.3x60x0.5	1	
9	23620-A2C4-0A0	Main Axle Comp.	11/47T	1	
10	96210-6201	Bearing, Ball	6201	1	
11	23630-A2C4-0A0	Gear, Driven	31T	1	
12	96160-HMK2515	Bearing, Needle	HMK2515	1	
13	90500-IRTW32	Circlip	IRTW-32	1	
14	91200-253560	Seal, Oil	25x35x6	1	
15	96210-6004LU	Bearing, Ball	6004LU	1	
16	90500-RTW42	Circlip	RTW-42	1	

E-10, Transmission (GOES50)



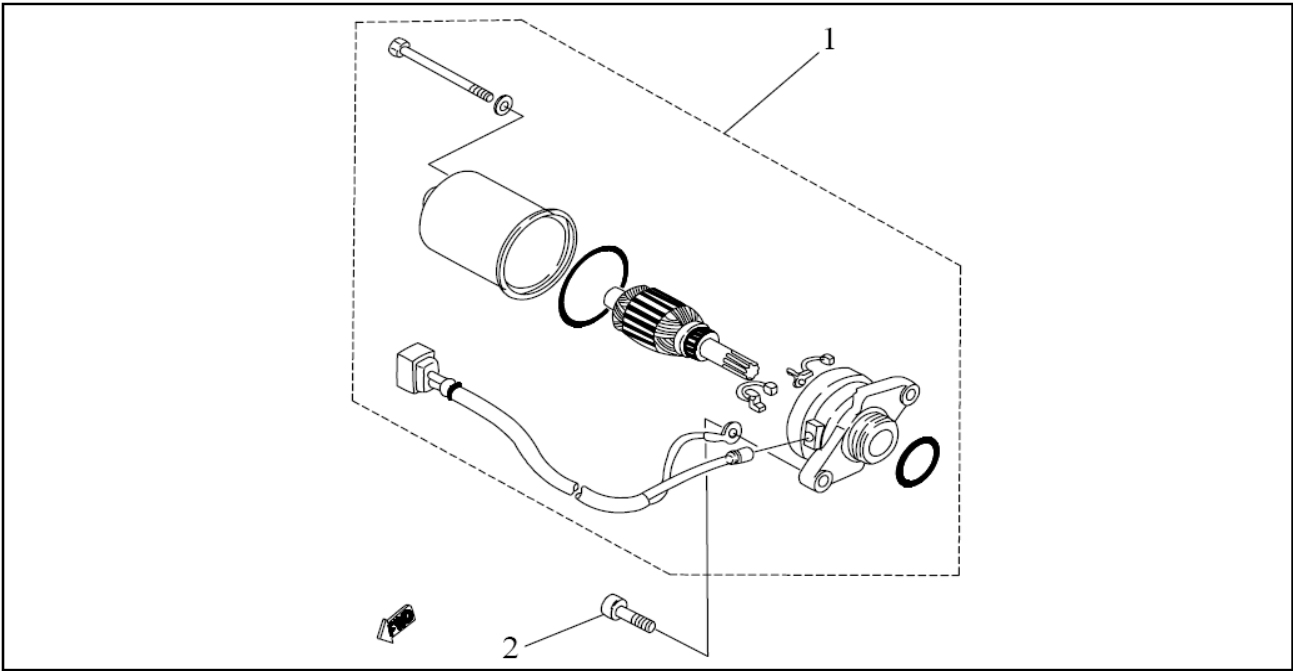
Item	Part No.	Part Name	Spec.	Q'ty	Note
17	23801-A2B-42015	Sprocket, Drive	420x15T	1	
18	90426-152920	Washer, Plate	14.5x26x2.0	1	
19	90350U-14000	Nut, U Locked	M14xP1.5	1	

E-11, Generator (GOES50)



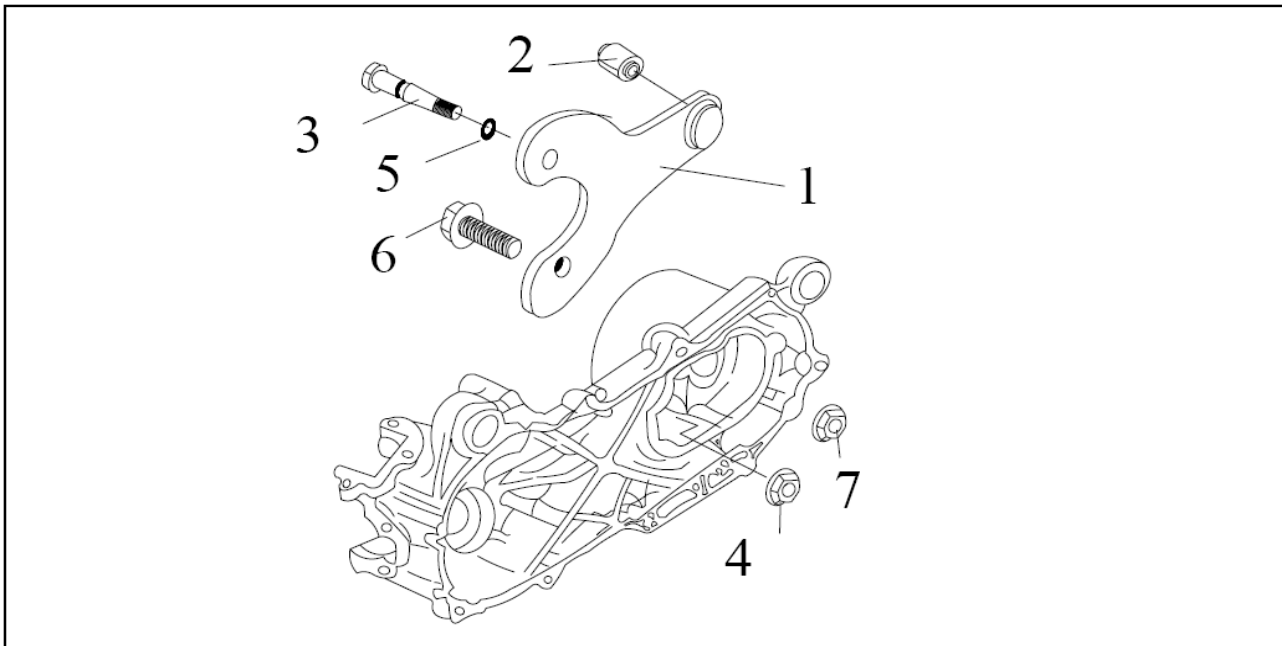
Item	Part No.	Part Name	Spec.	Q'ty	Note
1	31120-A2C4-000	Base Ass'y, Generator		1	
2	91000-06016	Hex,Socket Bolt	M6x15	2	
3	31100-A2B-000	Wheel, Fly		1	
4	90426-102216	Washer, Plate	10x22x1.6	1	
5	94100-10125	Hex. Acorn Nut	M10xP1.25	1	
6	31000-A2B-000	Generator Ass'y		1	

E-12, Starting Motor (GOES50)



Item	Part No.	Part Name	Spec.	Q'ty	Note
1	31200-A2C4-00A	Starting Motor Ass'y		1	
2	91000-06020	Hex. Socket Bolt	M6x20	2	

E-13, Crankcase Bracket (GOES50)



Item	Part No.	Part Name	Spec.	Q'ty	Note
1	11347-A2C4-000	Bracket, Crankcase		1	
2	97350-082021	Bush	8x20x21	1	
3	11348-A2C4-000	Shaft, Fix		1	
4	94200-08125	Hex. Acorn Washer Face Nut	M8xP1.25	1	
5	91300-075015	O-Ring	7.5x1.5	1	
6	91000-1205532-00B	Hex,Socket Bolt	M12xP1.75-L55	1	
7	NU-12C19-B	Hex. Nut, Nylon Lock	M12xP1.75	1	